

Ageing and Air Transportation Implications for Research and Policymakers

Presentation to Airneth
The Hague, Netherlands
November 23, 2006

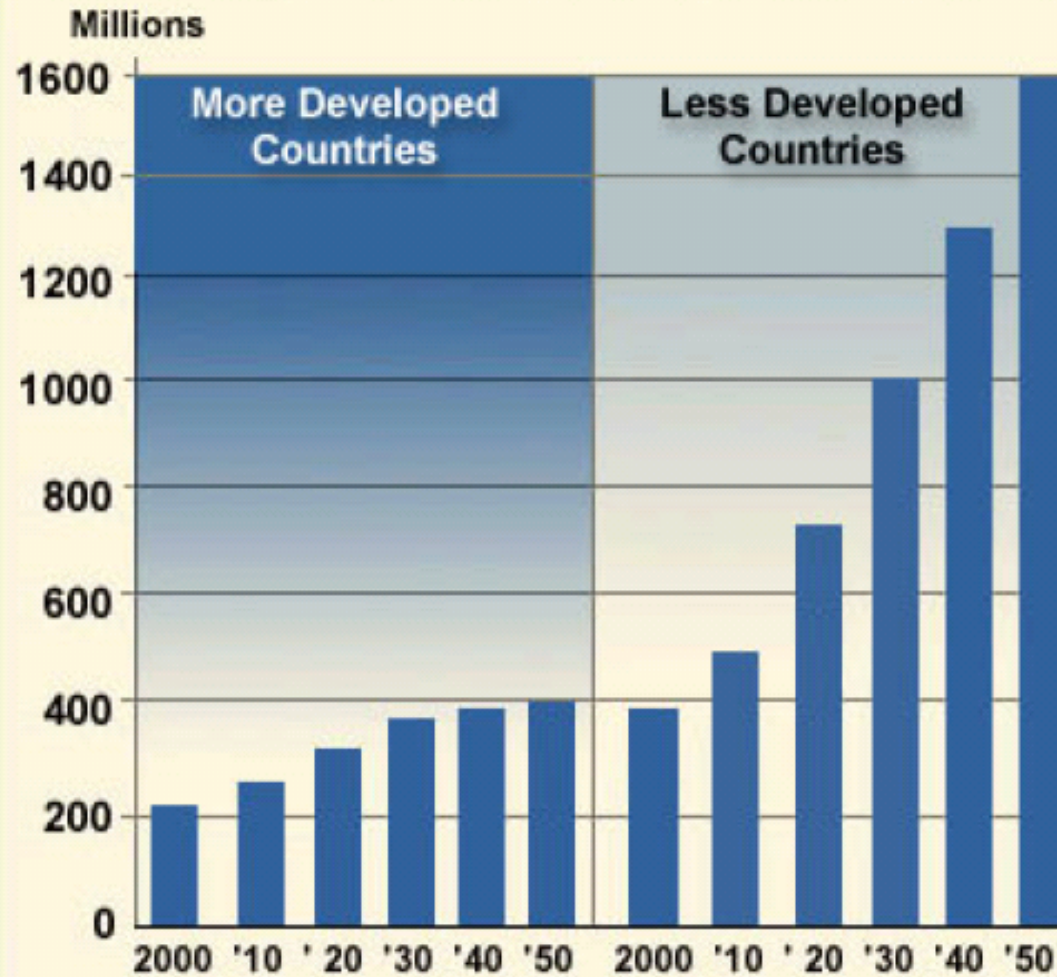
Harry P. Wolfe



Presentation Objectives

- Review impact of ageing on air travel
- Identify measures to assist older air travelers
- Emphasize role of stakeholders

World Population 60 and Over: 2000-2050



Source: U.S. Census Bureau, International Data Base.

Perspective



“I don't want a wheel chair. I just want to be able to walk it”

Changes with Age

- Sensory: Eyesight/Hearing
- Physiological: Mobility/Dexterity
- Mental: Anxiety



Eyesight Changes



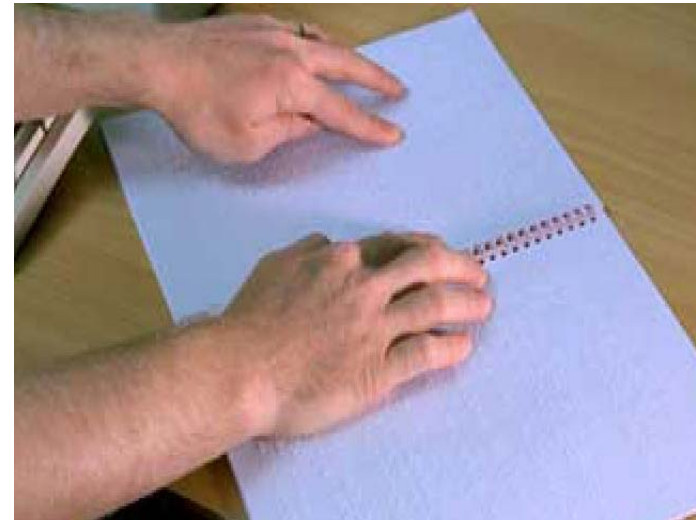
RPI Lighting Center
<http://www.lrc.rpi.edu/>

Visual Aging
www.psych.ucalgary.ca

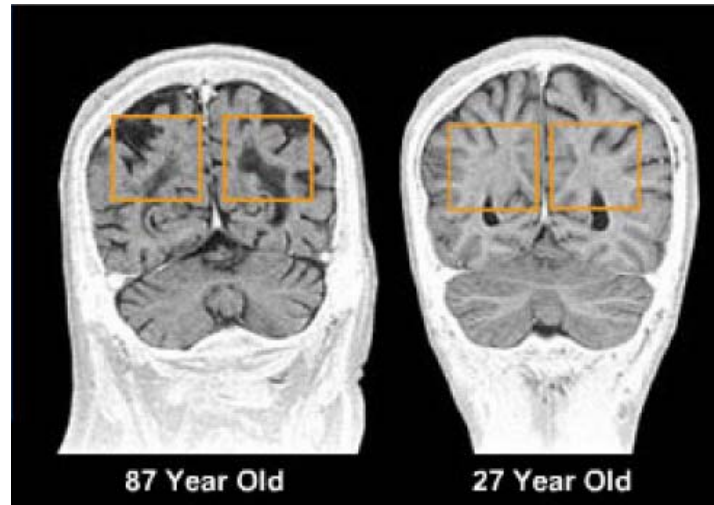


Maricopa Association
of Governments

Mobility/Dexterity Changes



Mental Changes



Oregon Brain Aging Study



Aircraft Manufacturers



AP



Maricopa Association
of Governments

Boeing Ageing Project



Aircraft Interior Designs

- Addition of assist handles
- Easier to use seat belts
- Better aisle illumination



Airlines



Airline Outreach

- Airport tours
- Partnering
 - Advocacy Groups
 - Advisory Committees
 - Hospitals



Airline Guided Airport Tours



Airports



Issues in Terminals

- Walking
- Waiting
- Way-finding



Walking Distances



Walking Up Grade



Walking Between Levels

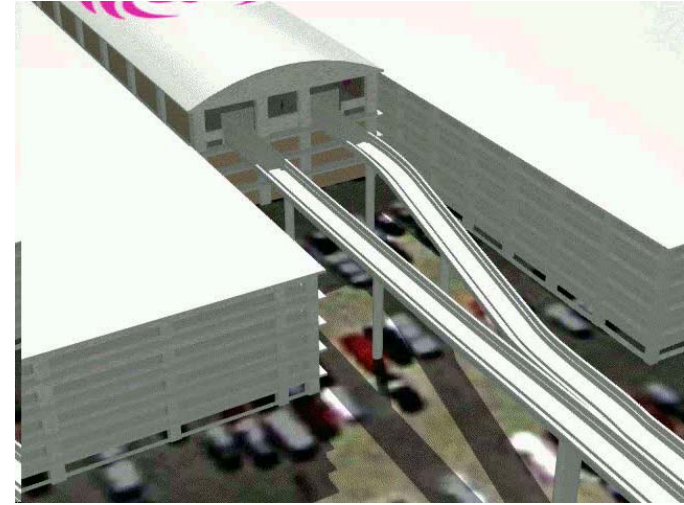


Walking Assistance

- Moving Sidewalks
- Electric Carts



Walking Assistance APM



Maricopa Association
of Governments

Waiting



Ticket Counter



Security



Gate Area



Baggage



Resting While Waiting



Way finding: Barrier

Informational vs. Commercial



Source:
Kessler McGuiness. 2004



Maricopa Association
of Governments

Way Finding: Facilitation

- Signage
- Technology
- Human touch



DPTAC Access for All – United Kingdom



National Center for Accessible Transportation
Oregon State University



Phoenix Sky Harbor Airport



Flight Info. Display Systems



Conclusions

- Older air traveler significant force
- Older adults different from PWDs
- More research required
- Need to engage stakeholders



Research Recommendations

- Estimate air trips by
 - Time period
 - Geography
 - Income
- Define air traveler behavior
- Conduct financial analysis

Policy Recommendations

- Reevaluate disability standards
- Evaluate sources of funding
- Partner with
 - ICAO
 - ECAC
 - FAA

A Parting Thought

“Life is more than to be survived”
Dr. Christopher K. Mitchell

For More Information

Contact:

Harry P. Wolfe
Senior Project Manager
hwolfe@mag.maricopa.gov

(602) 254-6300
www.mag.maricopa.gov

