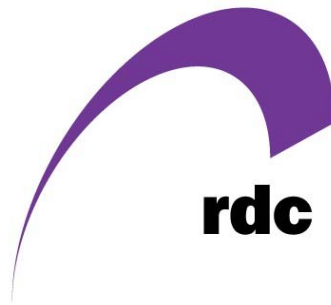


2007 Intra European Capacity Report

May

This report is produced by rdc in partnership with Innovata and data is derived from the Innovata SRS database. The report shows frequency and capacity information for all carriers contained within the Innovata SRS database for operations within Europe.

rdc is a provider of software, consultancy and data to the international aviation industry. For additional information, assistance or further details about rdc and its products, please contact info@routedev.com or visit www.routedev.com



Innovata is a global leader in travel content management and distribution solutions and as a partner of IATA, maintains and markets the SRS - one of the worlds largest flight databases - with over 900 participating airlines including over 100 Low Cost Carriers. Further information is available at www.innovata-llc.com

innovata



To add extra recipients to our distribution list, or to unsubscribe, please contact ian@routedev.com

Top 25 Airports by Departing Seat Capacity

		May 2007	% of Europe	May 2006	May 2005
MAD	Madrid	2,698,518	↑ 4.1%	2,321,225	↑ 2,175,268
LHR	London Heathrow	2,204,062	↑ 3.3%	2,129,840	↓ 2,459,627
CDG	Paris	2,172,060	↑ 3.3%	2,087,107	↑ 1,955,683
FRA	Frankfurt	2,152,874	↓ 3.3%	2,191,191	↑ 2,182,984
MUC	Munich	1,936,412	↑ 2.9%	1,668,535	↑ 1,616,172
BCN	Barcelona	1,825,812	↑ 2.8%	1,823,238	↑ 1,683,722
AMS	Amsterdam	1,772,567	↑ 2.7%	1,729,696	↑ 1,703,724
FCO	Rome	1,761,093	↑ 2.7%	1,672,416	↑ 1,668,512
STN	Stansted	1,328,671	↑ 2.0%	1,318,535	↑ 1,152,107
ORY	Paris	1,310,011	↓ 2.0%	1,313,856	↑ 1,213,808
OSL	Oslo	1,223,882	↑ 1.8%	1,197,038	↑ 1,052,085
PMI	Palma De Mallorca	1,184,079	↑ 1.8%	1,063,523	↑ 951,169
CPH	Copenhagen	1,182,860	↑ 1.8%	1,155,249	↑ 1,224,067
LGW	London Gatwick	1,165,768	↑ 1.8%	1,163,424	↑ 1,141,033
DUB	Dublin	1,164,669	↑ 1.8%	1,108,419	↑ 917,623
DUS	Dusseldorf	1,124,360	↑ 1.7%	972,510	↑ 927,500
MXP	Milan	1,047,668	↑ 1.6%	1,010,589	↑ 907,585
IST	Istanbul	1,033,778	↑ 1.6%	424,429	↑ 359,677
VIE	Vienna	1,029,259	↑ 1.6%	921,792	↑ 898,087
ARN	Stockholm	1,025,433	↓ 1.5%	1,063,395	↑ 1,078,657
ZRH	Zurich	1,006,818	↑ 1.5%	898,331	↑ 892,828
ATH	Athens	955,937	↑ 1.4%	887,020	↓ 898,013
TXL	Berlin	909,010	↑ 1.4%	694,864	↑ 715,395
BRU	Brussels	881,308	↑ 1.3%	860,802	↑ 806,053
HAM	Hamburg	781,420	↑ 1.2%	731,651	↑ 650,867

Top 25 Airlines by Departing Seat Capacity

		May 2007	% of Europe	May 2006	May 2005
LH	Lufthansa	5,742,117	↑ 7.8%	5,563,329	↓ 5,294,699
FR	Ryanair	5,243,238	↑ 7.1%	4,371,570	↑ 3,467,151
AF	Air France	4,770,750	↑ 6.4%	4,683,912	↓ 4,643,531
IB	Iberia	3,617,582	↓ 4.9%	3,715,729	↑ 3,940,478
U2	easyJet	3,590,899	↑ 4.9%	3,179,757	↑ 2,861,698
SK	SAS	3,588,879	↑ 4.8%	3,587,820	↓ 3,686,612
BA	British Airways	3,317,181	↓ 4.5%	3,551,137	↓ 4,217,419
AZ	Alitalia	2,887,210	↑ 3.9%	2,820,068	↑ 2,922,765
AB	Air Berlin	2,719,861	↑ 3.7%	1,843,474	↑ 1,812,152
TK	Turkish Airlines	1,901,558	↑ 2.6%	584,402	↑ 472,406
KL	KLM	1,678,716	↑ 2.3%	1,565,315	↓ 1,587,101
JK	Spanair	1,469,856	↑ 2.0%	1,201,428	↑ 1,051,467
X3	Hapag Lloyd Express	1,468,418	↑ 2.0%	526,160	↑ 436,800
LX	SWISS	1,254,446	↑ 1.7%	1,094,891	↑ 1,049,096
OS	Austrian	1,104,082	↑ 1.5%	1,042,967	↑ 978,942
AP	Air One	1,041,998	↑ 1.4%	773,955	↑ 728,392
BE	FlyBE	1,026,616	↑ 1.4%	760,311	↑ 661,322
EI	Aer Lingus	973,208	↑ 1.3%	923,634	↑ 840,427
UX	Air Europa	964,869	↑ 1.3%	738,904	↑ 666,713
TP	TAP-Air Portugal	880,114	↑ 1.2%	863,046	↑ 818,325
AY	Finnair	849,938	↓ 1.1%	896,114	↓ 1,010,667
4U	Germanwings	843,498	↑ 1.1%	739,788	↑ 533,024
OA	Olympic Airlines	835,014	↑ 1.1%	772,502	↓ 873,136
DY	Norwegian Air Shuttle	735,952	↑ 1.0%	590,832	↑ 383,024
SN	SN Brussels Airlines	700,842	↑ 0.9%	460,869	↑ 442,610

Headlines

Intra European Seats Available (000's)						
Carrier Type	Current Month	% of Market	Year to Date	% Growth	% of Market	2006 YTD
Low Cost	21,875	30.0%	91,231	17.2%	↑ 27.8%	77,825
Star Alliance	15,846	21.7%	73,143	4.6%	↑ 22.3%	69,908
Skyteam	10,712	14.7%	50,608	6.9%	↑ 15.4%	47,364
OneWorld	8,186	11.2%	39,365	(8.6%)	↓ 12.0%	43,078
Other	16,364	22.4%	73,346	38.5%	↑ 22.4%	52,941
Total Seats	72,983		327,694	12.6%	↑	291,115

Intra European Sectors Flown						
Carrier Type	Current Month	% of Market	Year to Date	% Growth	% of Market	2006 YTD
Star Alliance	143,626	23.2%	664,144	3.5%	↑ 23.6%	641,625
Low Cost	143,082	23.1%	596,085	16.1%	↑ 21.2%	513,268
Skyteam	94,760	15.3%	448,731	5.6%	↑ 15.9%	425,089
OneWorld	67,714	10.9%	332,671	(6.5%)	↓ 11.8%	355,910
Other	170,005	27.5%	776,026	21.9%	↑ 27.5%	636,482
Total Sectors	619,187		2,817,657	9.5%	↑	2,572,374

Intra European Average Aircraft Size				
Carrier Type	Current Month	Year to Date	% Growth	2006 YTD
Low Cost	152.9	153.1	0.9%	↑ 151.6
Star Alliance	110.3	110.1	1.1%	↑ 109.0
OneWorld	120.9	118.3	(2.2%)	↓ 121.0
Skyteam	113.0	112.8	1.2%	↑ 111.4
Other	96.3	94.5	13.6%	↑ 83.2
European ave AC size	118.7	117.8	2.2%	↑ 115.2

Alliance Airlines in this report

Star Alliance - Lufthansa, SAS, Spanair, SWISS, Austrian, TAP, bmi, LOT - Polish Airlines, Croatia Airlines, Blue1 , Adria Airways

One World - British Airways, Iberia, Finnair, Malev

Skyteam - Air France, Alitalia, KLM, CSA, Aeroflot

SWISS - Joined Star Alliance Apr 06

Aeroflot - Joined Skyteam Apr 06

Aer Lingus - Left Oneworld Sep 06

Malev - Joined Oneworld Apr 07

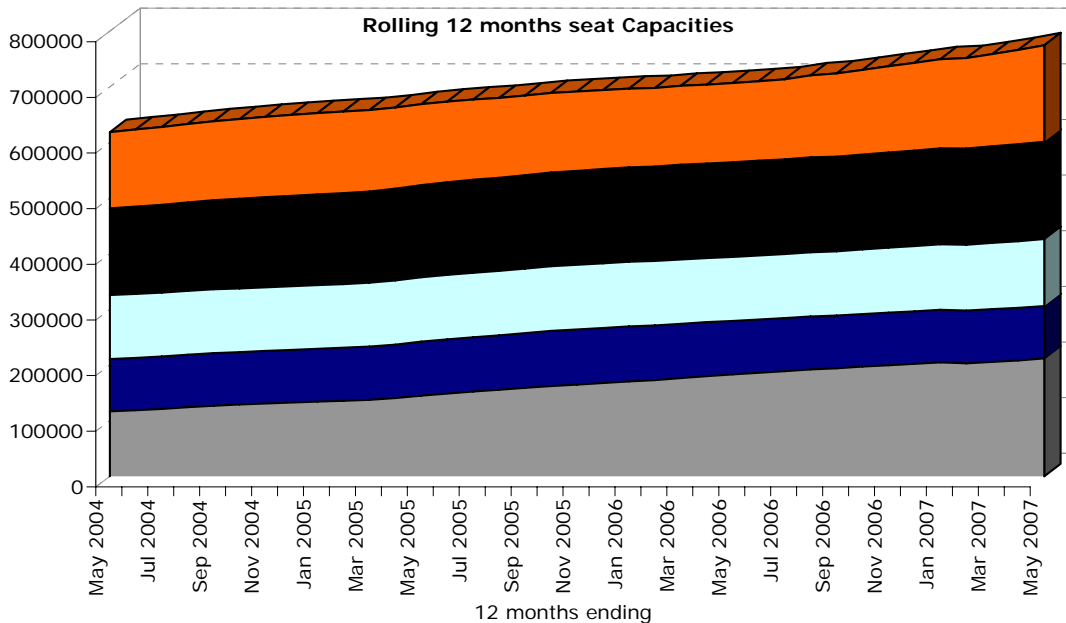


Chart Key

Low Cost	Star Alliance	Skyteam
OneWorld	Other	

2006 Market Share Growth

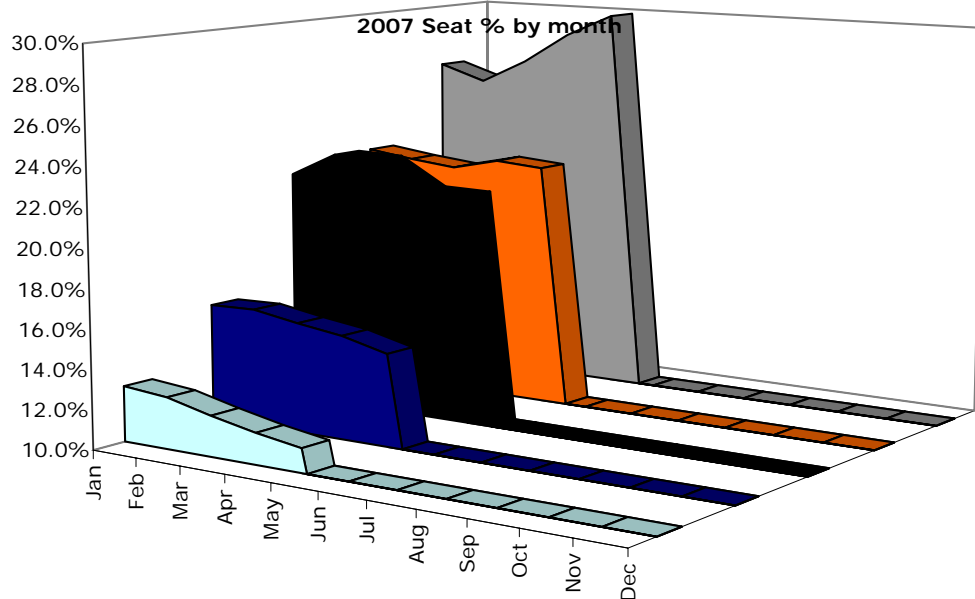


Chart Key



Average Aircraft size by Grouping

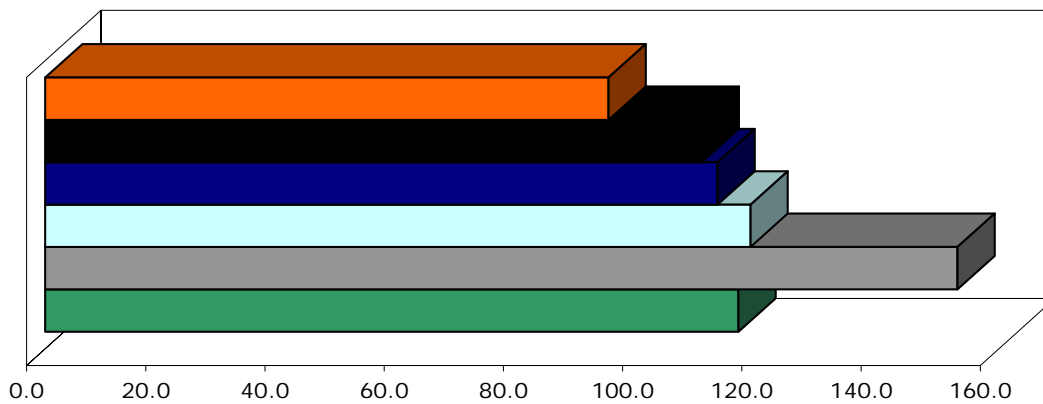





Chart Key



Intra European Destination and Airport Throughput Analysis: Month of May 2007

2007				2006				2005			
<u>Low Cost</u>				<u>Growth</u>				<u>Growth</u>			
Destinations Served		273	3.4%	↑	264		7.3%	246			
Most Served Low Cost Airports and Seats Available											
STN	Stansted	1,295,132	0.4%	↑	STN	Stansted	1,290,460	STN	Stansted	1,117,251	
PMI	Palma De Mallorca	716,763	28.0%	↑	PMI	Palma De Mallorca	559,794	PMI	Palma De Mallorca	446,833	
DUB	Dublin	567,370	12.4%	↑	DUB	Dublin	504,912	DUB	Dublin	343,662	
LGW	London Gatwick	535,681	12.4%	↑	LGW	London Gatwick	476,736	LGW	London Gatwick	421,416	
CGN	Cologne	520,896	27.4%	↑	CGN	Cologne	408,914	CGN	Cologne	384,177	
LTN	Luton	503,878	6.0%	↑	LTN	Luton	475,437	LTN	Luton	452,865	
TXL	Berlin	494,268	74.2%	↑	TXL	Berlin	283,656	TXL	Berlin	259,888	
MUC	Munich	415,364	57.0%	↑	MUC	Munich	264,558	MUC	Munich	235,267	
DUS	Dusseldorf	411,851	85.6%	↑	DUS	Dusseldorf	221,897	DUS	Dusseldorf	193,785	
MAN	Manchester	399,987	38.5%	↑	MAN	Manchester	288,853	MAN	Manchester	267,801	
<u>Star Alliance</u>				<u>Growth</u>				<u>Growth</u>			
Destinations Served		248	6.0%	↑	234		6.4%	220			
Most Served Star Alliance Airports and Seats Available											
FRA	Frankfurt	1,599,624	(1.3%)	↓	FRA	Frankfurt	1,620,244	FRA	Frankfurt	1,577,378	
MUC	Munich	1,137,679	9.9%	↑	MUC	Munich	1,035,163	MUC	Munich	1,018,837	
ZRH	Zurich	704,066	10.9%	↑	ZRH	Zurich	634,691	ZRH	Zurich	561,546	
OSL	Oslo	696,162	(1.9%)	↓	OSL	Oslo	709,708	OSL	Oslo	668,220	
CPH	Copenhagen	671,311	1.3%	↑	CPH	Copenhagen	662,920	CPH	Copenhagen	677,881	
VIE	Vienna	634,976	5.8%	↑	VIE	Vienna	599,935	VIE	Vienna	570,416	
ARN	Stockholm	598,146	6.5%	↑	ARN	Stockholm	561,832	ARN	Stockholm	618,160	
LHR	London Heathrow	598,085	(6.4%)	↓	LHR	London Heathrow	638,734	LHR	London Heathrow	687,823	
MAD	Madrid	544,426	16.2%	↑	MAD	Madrid	468,625	MAD	Madrid	437,363	
BCN	Barcelona	433,474	12.3%	↑	BCN	Barcelona	385,960	BCN	Barcelona	333,492	
<u>OneWorld</u>				<u>Growth</u>				<u>Growth</u>			
Destinations Served		186	4.5%	↑	178		2.3%	174			
Most Served OneWorld Airports and Seats Available											
MAD	Madrid	1,322,511	7.9%	↑	MAD	Madrid	1,221,987	MAD	Madrid	1,294,933	
LHR	London Heathrow	1,140,792	7.5%	↑	LHR	London Heathrow	1,061,363	LHR	London Heathrow	1,299,012	
BCN	Barcelona	602,041	(15.8%)	↓	BCN	Barcelona	715,204	BCN	Barcelona	804,608	
LGW	London Gatwick	488,930	(2.6%)	↓	LGW	London Gatwick	496,276	LGW	London Gatwick	554,465	
HEL	Helsinki	437,207	(2.3%)	↓	HEL	Helsinki	442,096	HEL	Helsinki	499,392	
PMI	Palma De Mallorca	118,565	7.3%	↑	PMI	Palma De Mallorca	110,537	PMI	Palma De Mallorca	111,525	
VLC	Valencia	116,034	(8.5%)	↓	VLC	Valencia	126,812	VLC	Valencia	124,817	
AGP	Malaga	110,901	(27.1%)	↓	AGP	Malaga	150,679	AGP	Malaga	156,287	
EDI	Edinburgh	105,910	(24.8%)	↓	EDI	Edinburgh	140,826	EDI	Edinburgh	188,568	
BIO	Bilbao	103,595	5.1%	↑	BIO	Bilbao	98,536	BIO	Bilbao	99,104	
<u>Skyteam</u>				<u>Growth</u>				<u>Growth</u>			
Destinations Served		175	8.7%	↑	161		3.9%	155			
Most Served Skyteam Airports and Seats Available											
CDG	Paris	1,392,025	4.1%	↑	CDG	Paris	1,337,594	CDG	Paris	1,331,189	
AMS	Amsterdam	932,709	6.7%	↑	AMS	Amsterdam	873,964	AMS	Amsterdam	890,487	
FCO	Rome	869,701	2.2%	↑	FCO	Rome	850,681	FCO	Rome	909,275	
ORY	Paris	721,837	(2.9%)	↓	ORY	Paris	743,099	ORY	Paris	741,402	
MXP	Milan	590,707	(2.1%)	↓	MXP	Milan	603,322	MXP	Milan	598,798	
SVO	Moscow	412,036	81.2%	↑	SVO	Moscow	227,449	SVO	Moscow	222,042	
PRG	Prague	382,257	7.3%	↑	PRG	Prague	356,258	PRG	Prague	359,185	
LIN	Milan	285,244	25.2%	↑	LIN	Milan	227,847	LIN	Milan	240,182	
LYS	Lyon	237,514	(2.1%)	↓	LYS	Lyon	242,688	LYS	Lyon	234,627	
NCE	Nice	216,248	4.7%	↑	NCE	Nice	206,631	NCE	Nice	207,102	

Intra European Airline Performance Analysis

Low Cost		2007 YTD			2006 YTD		
Growth	Airline	Seats	Sectors	Aircraft Size	Seats	Sectors	Aircraft Size
↑	Ryanair	23,877,315	126,335	189	18,513,748	101,723	182
↑	easyJet	17,682,955	117,483	151	16,108,741	105,206	153
↑	Air Berlin	9,497,049	59,068	161	8,013,823	49,211	163
↑	FlyBE	3,962,381	50,066	79	3,353,787	37,307	90
↑	Germanwings	3,514,924	24,830	142	3,189,000	22,996	139
↑	Norwegian Air Shuttle	2,984,632	20,433	146	2,287,459	15,683	146
↓	dba	2,781,285	22,397	124	2,781,912	23,149	120
↑	Vueling Airlines	2,855,700	15,865	180	2,124,180	11,801	180
↑	bmibaby	2,479,742	17,472	142	2,301,082	16,929	136
↑	Sterling European	2,355,192	14,885	158	1,606,316	9,889	162

Star Alliance		2007 YTD			2006 YTD		
Growth	Airline	Seats	Sectors	Aircraft Size	Seats	Sectors	Aircraft Size
↑	Lufthansa	26,696,202	256,556	104	24,186,251	241,587	100
↓	SAS	16,652,643	131,738	126	17,660,522	134,709	131
↑	Spanair	5,832,811	42,278	138	4,646,189	37,009	126
↑	SWISS	6,026,067	46,989	128	5,033,169	44,707	113
↑	Austrian	4,960,712	58,881	84	4,449,669	57,452	77
↑	TAP-Air Portugal	4,354,328	29,757	146	3,960,645	27,609	143
↓	bmi	3,283,443	31,841	103	4,159,221	32,232	129
↑	LOT - Polish Airlines	2,401,439	35,913	67	2,109,192	34,254	62
↑	Blue1	1,106,228	12,136	91	875,886	14,425	61
↑	Croatia Airlines	1,184,926	9,639	123	1,059,804	9,741	109
↓	Adria Airways	644,688	8,416	77	802,858	7,900	102

OneWorld		2007 YTD			2006 YTD		
Growth	Airline	Seats	Sectors	Aircraft Size	Seats	Sectors	Aircraft Size
↓	Iberia	17,734,747	152,950	116	17,890,207	143,668	125
↓	British Airways	16,615,803	135,118	123	20,120,703	151,431	133
↑	Finnair	4,248,549	36,181	117	3,506,544	37,732	93
↑	Malev	765,675	8,422	91	-	-	-
↓	Aer Lingus	-	-	-	3,746,186	23,079	162

Skyteam		2007 YTD			2006 YTD		
Growth	Airline	Seats	Sectors	Aircraft Size	Seats	Sectors	Aircraft Size
↑	Air France	23,067,226	212,953	108	22,814,712	213,237	107
↓	Alitalia	13,677,214	105,992	129	13,711,162	101,360	135
↓	KLM	7,633,396	72,910	105	7,667,150	69,361	111
↑	Aeroflot	3,207,815	27,480	117	1,538,754	12,381	124
↑	CSA	3,022,558	29,396	103	2,884,790	28,750	100

Other		2007 YTD			2006 YTD		
Growth	Airline	Seats	Sectors	Aircraft Size	Seats	Sectors	Aircraft Size
↑	Turkish Airlines	8,379,892	51,646	162	2,186,071	15,970	137
↑	Air One	4,678,396	37,275	126	4,323,852	27,858	155
↑	Aer Lingus	4,591,516	24,757	185	-	-	-
↑	Air Europa	4,411,782	23,822	185	3,632,956	19,485	186
↓	Olympic Airlines	2,842,408	39,161	73	3,178,175	38,050	84
↑	Aegean Airlines	3,702,017	21,016	176	2,401,754	18,521	130
↓	Wideroe	2,626,660	64,813	41	2,751,559	67,307	41
↓	Meridiana	2,488,576	19,442	128	2,596,225	18,173	143
↑	SN Brussels Airlines	2,723,863	27,297	100	2,092,181	23,022	91
↑	Royal Air Maroc	2,407,175	18,129	133	1,412,113	10,526	134