

## Top 25 Airports by Departing Seat Capacity

		Jun 2006	% of Europe	Jun 2005	Jun 2004
MAD	Madrid	2,266,080	↑ 3.5%	2,158,299	↑ 2,045,871
FRA	Frankfurt	2,156,185	↑ 3.3%	2,146,319	↓ 2,167,468
LHR	London Heathrow	2,078,662	↓ 3.2%	2,159,867	↓ 2,383,903
CDG	Paris	2,048,498	↑ 3.1%	1,902,260	↓ 1,982,963
BCN	Barcelona	1,794,114	↑ 2.7%	1,660,882	↓ 1,517,639
AMS	Amsterdam	1,699,568	↑ 2.6%	1,595,730	↓ 1,605,247
FCO	Rome	1,642,415	↑ 2.5%	1,573,951	↑ 1,552,513
MUC	Munich	1,640,954	↑ 2.5%	1,634,428	↑ 1,622,010
ORY	Paris	1,291,266	↑ 2.0%	1,222,417	↓ 1,296,001
STN	Stansted	1,289,268	↑ 2.0%	1,134,112	↑ 1,008,540
CPH	Copenhagen	1,140,661	↓ 1.7%	1,175,635	↓ 1,185,058
LGW	London Gatwick	1,105,213	↑ 1.7%	1,081,228	↑ 1,011,235
DUB	Dublin	1,084,818	↑ 1.7%	880,614	↑ 852,121
PMI	Palma De Mallorca	1,076,669	↑ 1.6%	1,000,890	↑ 747,487
MXP	Milan	999,800	↑ 1.5%	880,431	↑ 812,651
DUS	Dusseldorf	987,038	↑ 1.5%	950,765	↑ 882,987
ARN	Stockholm	959,220	↓ 1.5%	973,062	↓ 995,970
VIE	Vienna	911,031	↑ 1.4%	871,942	↑ 815,493
ZRH	Zurich	907,509	↑ 1.4%	874,214	↑ 798,139
ATH	Athens	901,384	↑ 1.4%	862,899	↓ 909,165
BRU	Brussels	849,264	↑ 1.3%	807,893	↓ 843,987
HAM	Hamburg	719,577	↑ 1.1%	678,674	↑ 632,343
HEL	Helsinki	717,288	↑ 1.1%	705,928	↑ 435,247
MAN	Manchester	713,627	↓ 1.1%	715,145	↑ 630,490
TXL	Berlin	681,999	↓ 1.0%	724,441	↓ 649,744

## Top 25 Airlines by Departing Seat Capacity

		Jun 2006	% of Europe	Jun 2005	Jun 2004
LH	Lufthansa	5,360,695	↓ 8.6%	5,367,774	↓ 5,540,032
AF	Air France	4,673,134	↑ 7.5%	4,647,318	↓ 4,691,662
FR	Ryanair	4,232,412	↑ 6.8%	3,314,622	↑ 2,629,986
IB	Iberia	3,595,238	↓ 5.8%	3,749,555	↓ 3,563,057
BA	British Airways	3,498,824	↓ 5.6%	3,643,714	↓ 3,943,085
SK	SAS	3,482,098	↓ 5.6%	3,638,852	↑ 2,805,245
U2	easyJet	3,143,468	↑ 5.0%	2,832,412	↑ 2,401,196
AZ	Alitalia	2,732,668	↓ 4.4%	2,737,040	↑ 2,515,135
AB	Air Berlin	1,921,867	↓ 3.1%	1,953,464	↓ 793,364
KL	KLM	1,532,433	↑ 2.5%	1,469,296	↓ 1,541,628
JK	Spanair	1,237,030	↑ 2.0%	1,170,888	↑ 973,788
LX	SWISS	1,055,037	↑ 1.7%	1,035,827	↓ 1,019,562
OS	Austrian	1,040,411	↑ 1.7%	908,740	↓ 967,298
EI	Aer Lingus	897,125	↑ 1.4%	812,105	↑ 702,138
AY	Finnair	889,982	↓ 1.4%	948,982	↑ 552,793
TP	TAP-Air Portugal	871,965	↑ 1.4%	804,333	↓ 843,177
AP	Air One	807,773	↑ 1.3%	715,716	↓ 794,548
OA	Olympic Airlines	784,502	↓ 1.3%	847,048	↑ 840,252
DE	Condor Flugdienst	783,659	↑ 1.3%	684,109	↓ 857,325
BE	FlyBE	767,172	↑ 1.2%	669,195	↑ 531,405
4U	Germanwings	719,572	↑ 1.2%	580,388	↑ 390,841
UX	Air Europa	717,008	↓ 1.1%	816,408	↑ 650,402
BD	bmi	710,699	↓ 1.1%	807,038	↓ 876,024
HF	Hapag Lloyd Flug	669,234	↓ 1.1%	858,364	↑ 844,478
TK	Turkish Airlines	665,259	↑ 1.1%	553,975	↑ 469,160



**Headlines**

Intra European Seats Available (000's)							
Carrier Type	Current Month	% of Market	Year to Date	% Growth		% of Market	2005 YTD
Low Cost	18,024	28.5%	95,848	19.7%	↑	27.0%	80,074
Star Alliance	14,849	23.5%	84,757	1.2%	↑	23.9%	83,726
Skyteam	9,891	15.6%	57,255	5.3%	↑	16.2%	54,396
OneWorld	8,881	14.0%	51,960	(11.1%)	↓	14.7%	58,449
Other	11,671	18.4%	64,612	(4.5%)	↓	18.2%	67,687
<b>Total Seats</b>	<b>63,316</b>		<b>354,431</b>	<b>2.9%</b>	<b>↑</b>		<b>344,331</b>

Intra European Sectors Flown							
Carrier Type	Current Month	% of Market	Year to Date	% Growth		% of Market	2005 YTD
Star Alliance	134,976	24.5%	776,601	0.5%	↑	24.9%	772,837
Low Cost	117,152	21.2%	630,420	13.2%	↑	20.2%	556,793
Skyteam	88,996	16.1%	514,085	(0.1%)	↓	16.5%	514,677
OneWorld	75,730	13.7%	431,640	4.0%	↑	13.8%	414,883
Other	134,461	24.4%	770,943	(4.5%)	↓	24.7%	807,037
<b>Total Sectors</b>	<b>551,315</b>		<b>3,123,689</b>	<b>1.9%</b>	<b>↑</b>		<b>3,066,227</b>

Intra European Average Aircraft Size				
Carrier Type	Current Month	Year to Date	% Growth	2005 YTD
Low Cost	153.8	152.0	5.7%	↑
Star Alliance	110.0	109.1	0.7%	↑
OneWorld	117.3	120.4	-8.2%	↓
Skyteam	111.1	111.4	-1.9%	↓
Other	86.8	83.8	-0.1%	↓
<b>European ave AC size</b>	<b>115.8</b>	<b>115.3</b>	<b>-0.7%</b>	<b>↓</b>

**Alliance Airlines in this report**

Star Alliance

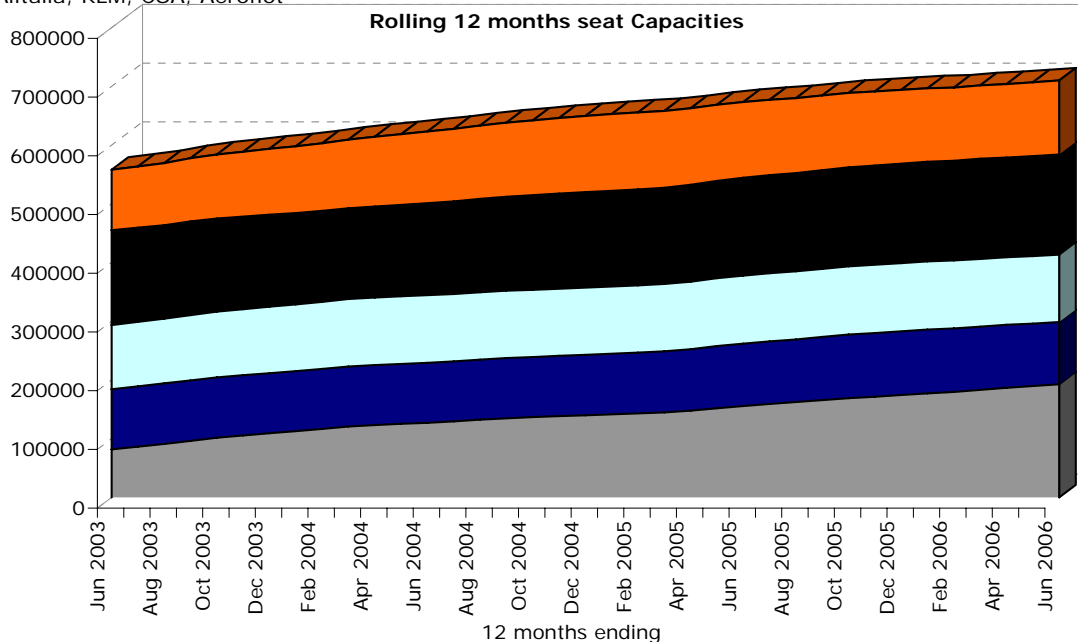
Lufthansa, SAS, Spanair, SWISS, Austrian, TAP, bmi, LOT - Polish Airlines, Blue1, Croatia Airlines, Adria Airways

OneWorld

British Airways, Iberia, Finnair, Aer Lingus

Skyteam

Air France, Alitalia, KLM, CSA, Aeroflot



**Chart Key**

Low Cost	Star Alliance	Skyteam
OneWorld	Other	



2006 Market Share Growth

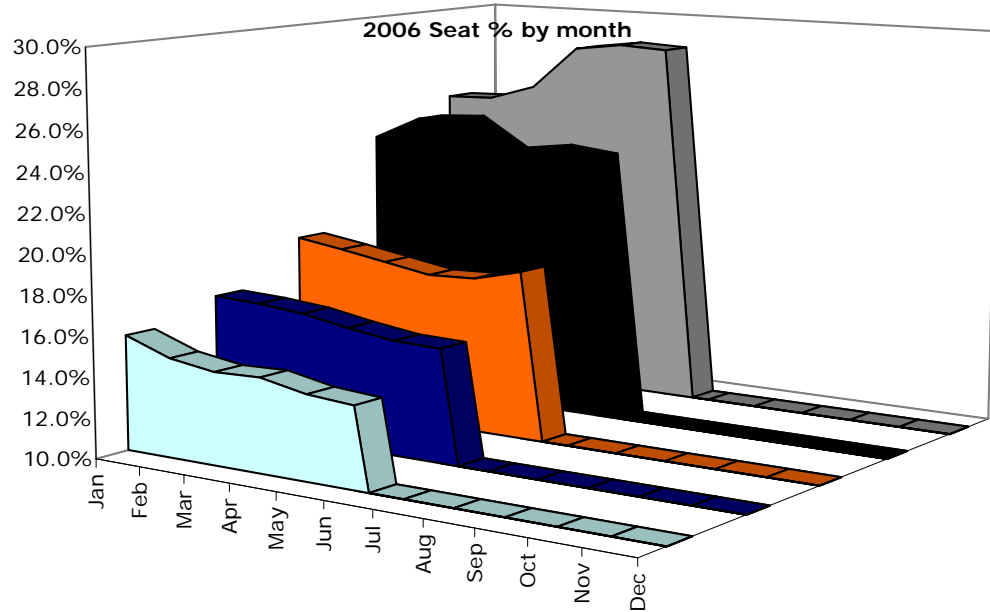


Chart Key



Average Aircraft size by Grouping

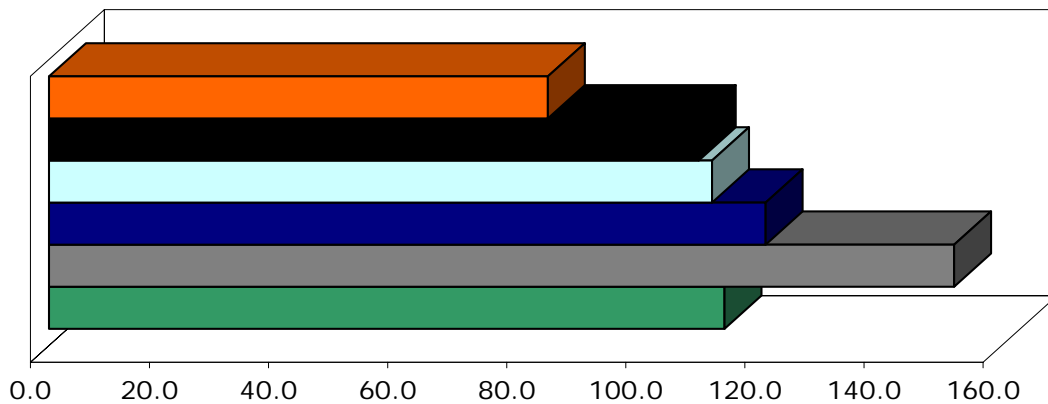





Chart Key



## Intra European Destination and Airport Throughput Analysis: Month of June 2006

2006				2005				2004			
<u>Low Cost</u>				<u>Growth</u>				<u>Growth</u>			
Destinations Served		268	5.9%	↑	253		10.0%	230			
Most Served Low Cost Airports and Seats Available											
STN	Stansted	1,258,822	14.3%	↑	STN	Stansted	1,101,107	STN	Stansted	977,847	
PMI	Palma De Mallorca	566,228	19.0%	↑	PMI	Palma De Mallorca	475,777	PMI	Palma De Mallorca	231,639	
DUB	Dublin	487,375	55.0%	↑	DUB	Dublin	314,510	DUB	Dublin	328,767	
LTN	Luton	470,074	8.1%	↑	LTN	Luton	434,726	LTN	Luton	335,528	
LGW	London Gatwick	466,154	13.9%	↑	LGW	London Gatwick	409,201	LGW	London Gatwick	315,462	
BCN	Barcelona	424,033	59.5%	↑	BCN	Barcelona	265,776	BCN	Barcelona	196,336	
CGN	Cologne	402,623	1.8%	↑	CGN	Cologne	395,622	CGN	Cologne	313,258	
AMS	Amsterdam	395,530	22.1%	↑	AMS	Amsterdam	324,035	AMS	Amsterdam	295,085	
AGP	Malaga	345,311	8.2%	↑	AGP	Malaga	319,158	AGP	Malaga	238,888	
OSL	Oslo	326,985	54.3%	↑	OSL	Oslo	211,925	OSL	Oslo	184,985	
<u>Star Alliance</u>				<u>Growth</u>				<u>Growth</u>			
Destinations Served		240	7.1%	↑	224		4.2%	215			
Most Served Star Alliance Airports and Seats Available											
FRA	Frankfurt	1,557,589	(0.7%)	↓	FRA	Frankfurt	1,568,316	FRA	Frankfurt	1,589,614	
MUC	Munich	1,001,378	(2.2%)	↓	MUC	Munich	1,023,886	MUC	Munich	1,023,047	
OSL	Oslo	704,561	2.5%	↑	OSL	Oslo	687,145	OSL	Oslo	453,003	
CPH	Copenhagen	642,952	(3.1%)	↓	CPH	Copenhagen	663,302	CPH	Copenhagen	707,996	
LHR	London Heathrow	630,012	(5.7%)	↓	LHR	London Heathrow	668,148	LHR	London Heathrow	740,275	
ZRH	Zurich	611,600	10.4%	↑	ZRH	Zurich	554,055	ZRH	Zurich	514,177	
VIE	Vienna	588,143	9.7%	↑	VIE	Vienna	536,322	VIE	Vienna	565,989	
ARN	Stockholm	523,384	(9.2%)	↓	ARN	Stockholm	576,563	ARN	Stockholm	633,622	
MAD	Madrid	478,162	1.6%	↑	MAD	Madrid	470,721	MAD	Madrid	415,345	
BCN	Barcelona	386,470	9.9%	↑	BCN	Barcelona	351,740	BCN	Barcelona	308,538	
<u>OneWorld</u>				<u>Growth</u>				<u>Growth</u>			
Destinations Served		185	1.6%	↑	182		19.7%	152			
Most Served OneWorld Airports and Seats Available											
MAD	Madrid	1,187,093	(3.3%)	↓	MAD	Madrid	1,227,591	MAD	Madrid	1,212,801	
LHR	London Heathrow	1,142,251	(2.4%)	↓	LHR	London Heathrow	1,170,937	LHR	London Heathrow	1,265,176	
BCN	Barcelona	696,997	(6.9%)	↓	BCN	Barcelona	748,868	BCN	Barcelona	741,940	
LGW	London Gatwick	504,586	(1.8%)	↓	LGW	London Gatwick	513,729	LGW	London Gatwick	544,350	
HEL	Helsinki	438,271	(6.0%)	↓	HEL	Helsinki	466,428	HEL	Helsinki	268,808	
DUB	Dublin	406,492	10.5%	↑	DUB	Dublin	367,952	DUB	Dublin	328,509	
MAN	Manchester	183,026	(17.8%)	↓	MAN	Manchester	222,700	MAN	Manchester	256,871	
AGP	Malaga	168,964	2.6%	↑	AGP	Malaga	164,749	AGP	Malaga	142,252	
EDI	Edinburgh	145,427	(7.9%)	↓	EDI	Edinburgh	157,825	EDI	Edinburgh	158,661	
AMS	Amsterdam	130,777	3.9%	↑	AMS	Amsterdam	125,855	AMS	Amsterdam	129,107	
<u>Skyteam</u>				<u>Growth</u>				<u>Growth</u>			
Destinations Served		162	1.3%	↑	160		(0.6%)	161			
Most Served Skyteam Airports and Seats Available											
CDG	Paris	1,307,133	1.2%	↑	CDG	Paris	1,291,069	CDG	Paris	1,337,337	
AMS	Amsterdam	856,896	3.9%	↑	AMS	Amsterdam	825,020	AMS	Amsterdam	847,786	
FCO	Rome	816,652	(3.5%)	↓	FCO	Rome	846,160	FCO	Rome	798,804	
ORY	Paris	751,594	(0.4%)	↓	ORY	Paris	754,576	ORY	Paris	758,434	
MPX	Milan	594,992	4.4%	↑	MPX	Milan	569,916	MPX	Milan	490,922	
PRG	Prague	347,624	(1.7%)	↓	PRG	Prague	353,674	PRG	Prague	303,376	
LYS	Lyon	247,204	0.3%	↑	LYS	Lyon	246,494	LYS	Lyon	230,710	
SVO	Moscow (Sheremety)	223,291	3.1%	↑	SVO	Moscow (Sheremety)	216,668	SVO	Moscow (Sheremety)	202,808	
LIN	Milan	212,507	(0.3%)	↓	LIN	Milan	213,205	LIN	Milan	191,002	
TLS	Toulouse	206,111	0.0%	↑	TLS	Toulouse	206,099	TLS	Toulouse	206,250	



## Intra European Airline Performance Analysis

Low Cost		2006 YTD			2005 YTD		
Growth	Airline	Seats	Sectors	Aircraft Size	Seats	Sectors	Aircraft Size
↑	Ryanair	22,746,160	124,117	183	17,480,041	102,550	170
↑	easyJet	19,594,785	127,887	153	17,115,012	112,811	152
↑	Air Berlin	9,935,690	61,275	162	7,429,026	46,969	158
↑	FlyBE	4,120,959	45,962	90	3,511,282	41,139	85
↑	Germanwings	3,908,572	28,102	139	2,809,795	20,036	140
↑	dba	3,348,956	27,864	120	2,822,518	21,981	128
↑	Norwegian Air Shuttle	2,853,707	19,509	146	1,905,648	12,876	148
↑	Vueling Airlines	2,684,160	14,912	180	1,164,138	7,408	157
↑	bmibaby	2,833,720	20,677	137	2,603,420	19,442	134
↑	Hapag Lloyd Express	2,434,388	17,684	138	2,209,120	16,110	137
Star Alliance		2006 YTD			2005 YTD		
Growth	Airline	Seats	Sectors	Aircraft Size	Seats	Sectors	Aircraft Size
↑	Lufthansa	30,435,602	292,609	104	29,546,239	287,777	103
↓	SAS	20,311,375	162,317	125	21,299,374	170,995	125
↑	Spanair	6,634,982	45,626	145	5,817,077	38,293	152
↑	SWISS	6,151,313	53,891	114	6,068,996	61,393	99
↑	Austrian	5,660,284	69,722	81	5,355,259	66,094	81
↑	TAP	4,955,953	33,507	148	4,764,978	32,743	146
↓	bmi	4,524,308	38,761	117	4,966,259	40,494	123
↑	LOT - Polish Airlines	2,670,184	41,162	65	2,567,645	38,167	67
↑	Blue1	1,373,430	17,462	79	1,079,200	15,685	69
↓	Croatia Airlines	1,297,121	11,912	109	1,337,906	11,803	113
↓	Adria Airways	742,403	9,632	77	923,238	9,393	98
OneWorld		2006 YTD			2005 YTD		
Growth	Airline	Seats	Sectors	Aircraft Size	Seats	Sectors	Aircraft Size
↓	Iberia	20,968,792	175,376	120	21,629,362	169,762	127
↓	British Airways	20,458,560	182,960	112	23,753,981	185,128	128
↑	Aer Lingus	5,111,979	27,992	183	4,558,291	26,883	170
↑	Finnair	5,420,279	45,312	120	4,454,338	33,110	135
Skyteam		2006 YTD			2005 YTD		
Growth	Airline	Seats	Sectors	Aircraft Size	Seats	Sectors	Aircraft Size
↓	Air France	27,350,516	257,381	106	27,462,030	257,368	107
↓	Alitalia	15,777,670	122,527	129	16,448,202	126,750	130
↓	KLM	8,686,493	84,399	103	9,136,446	82,077	111
↓	CSA	3,466,573	34,777	100	3,516,720	34,364	102
↑	Aeroflot	1,973,598	15,001	132	1,885,406	14,118	134
Other		2006 YTD			2005 YTD		
Growth	Airline	Seats	Sectors	Aircraft Size	Seats	Sectors	Aircraft Size
↓	Air Europa	4,365,419	23,380	187	4,448,996	25,933	172
↓	Air One	4,301,652	34,153	126	5,039,568	33,703	150
↓	Olympic Airlines	3,281,421	46,496	71	4,025,223	38,415	105
↓	Wideroe	3,101,748	80,903	38	3,328,121	82,170	41
↑	Turkish Airlines	2,950,530	20,083	147	2,740,046	16,950	162
↑	Aegean Airlines	3,277,764	22,801	144	2,909,090	22,339	130
↑	SN Brussels Airlines	2,592,882	27,952	93	2,555,006	27,697	92
↑	Malev-Hungarian Airlines	2,085,778	23,456	89	1,880,489	21,666	87
↑	Binter Canarias	1,968,204	26,340	75	1,825,527	25,308	72
↑	Royal Air Maroc	1,846,239	12,773	145	1,684,661	12,163	139

# innovative *management information*

## low cost monitor 2006

The fourth edition of rdc's popular Low Cost Monitor series is the most comprehensive review of low-cost operations across Europe ever produced. The 200-page report is essential reading to any aviation professional in today's fast-moving and ever-changing market analysing, in detail, the activities of over 30 carriers across 32 European countries and reviewing their effect on numerous markets after a decade of service. The report begins with its customary overview of the European market and also

comprises a number of new sections providing detailed analysis by country, airport and market. For the first time each of the 30+ carriers is reviewed in great detail including network maps, history and a break-down of services and frequencies offered for 2006.

The 2006 LCM really is the definitive guide to low-cost operations across Europe today!



The Low Cost Monitor 2006 has now been published! Available from only GBP299 and in hard-copy or PDF form, the Low-Cost Monitor 2006 can be ordered from [chris@routedev.com](mailto:chris@routedev.com). Reserve your copy today!

for further information please call +44 116 254 9252 or email [rdc@routedev.com](mailto:rdc@routedev.com). [www.routedev.com](http://www.routedev.com)

