


Top 25 Airports by Departing Seat Capacity

		May 2006	% of Europe	May 2005	May 2004
MAD	Madrid	2,321,225	↑ 3.5%	2,175,268	↑ 1,999,891
FRA	Frankfurt	2,191,191	↑ 3.3%	2,182,984	↓ 2,183,689
LHR	London Heathrow	2,129,840	↓ 3.2%	2,459,627	↑ 2,433,400
CDG	Paris	2,087,107	↑ 3.1%	1,955,683	↓ 2,004,062
BCN	Barcelona	1,823,238	↑ 2.7%	1,683,722	↑ 1,503,924
AMS	Amsterdam	1,729,696	↑ 2.6%	1,703,724	↑ 1,645,942
FCO	Rome	1,672,416	↑ 2.5%	1,668,512	↑ 1,561,209
MUC	Munich	1,668,535	↑ 2.5%	1,616,172	↑ 1,603,524
STN	Stansted	1,318,535	↑ 2.0%	1,152,107	↑ 1,039,282
ORY	Paris	1,313,856	↑ 2.0%	1,213,808	↓ 1,292,200
LGW	London Gatwick	1,163,424	↑ 1.8%	1,141,033	↑ 1,002,466
CPH	Copenhagen	1,155,249	↓ 1.7%	1,224,067	↑ 1,185,311
DUB	Dublin	1,108,419	↑ 1.7%	917,623	↑ 866,436
PMI	Palma De Mallorca	1,063,523	↑ 1.6%	951,169	↑ 738,279
ARN	Stockholm	1,063,395	↓ 1.6%	1,078,657	↑ 1,013,841
MXP	Milan	1,010,589	↑ 1.5%	907,585	↑ 814,456
DUS	Dusseldorf	972,510	↑ 1.5%	927,500	↑ 888,542
VIE	Vienna	921,792	↑ 1.4%	898,087	↑ 813,874
ZRH	Zurich	898,331	↑ 1.4%	892,828	↑ 816,843
ATH	Athens	887,020	↓ 1.3%	898,013	↓ 911,193
BRU	Brussels	860,802	↑ 1.3%	806,053	↓ 851,967
MAN	Manchester	757,749	↑ 1.1%	783,374	↑ 618,827
HAM	Hamburg	731,651	↑ 1.1%	650,867	↑ 617,845
HEL	Helsinki	730,029	↓ 1.1%	750,561	↑ 433,048
TXL	Berlin	694,864	↓ 1.0%	715,395	↓ 628,105

Top 25 Airlines by Departing Seat Capacity

		May 2006	% of Europe	May 2005	May 2004
LH	Lufthansa	5,563,329	↑ 8.8%	5,294,699	↓ 5,535,290
AF	Air France	4,683,912	↑ 7.4%	4,643,531	↓ 4,678,138
FR	Ryanair	4,371,570	↑ 6.9%	3,467,151	↑ 2,700,004
IB	Iberia	3,715,729	↓ 5.8%	3,940,478	↑ 3,515,977
SK	SAS	3,587,820	↓ 5.6%	3,686,612	↑ 2,817,751
BA	British Airways	3,551,137	↓ 5.6%	4,217,419	↑ 3,967,723
U2	easyJet	3,179,757	↑ 5.0%	2,861,698	↑ 2,372,264
AZ	Alitalia	2,820,068	↓ 4.4%	2,922,765	↓ 2,585,137
AB	Air Berlin	1,843,474	↑ 2.9%	1,812,152	↑ 796,430
KL	KLM	1,565,315	↓ 2.5%	1,587,101	↑ 1,566,174
JK	Spanair	1,201,428	↑ 1.9%	1,051,467	↑ 888,528
LX	SWISS	1,094,891	↑ 1.7%	1,049,096	↑ 1,049,308
OS	Austrian	1,042,967	↑ 1.6%	978,942	↓ 983,615
EI	Aer Lingus	923,634	↑ 1.5%	840,427	↑ 707,158
AY	Finnair	896,114	↓ 1.4%	1,010,667	↑ 546,948
TP	TAP-Air Portugal	863,046	↑ 1.4%	818,325	↓ 824,487
AP	Air One	773,955	↑ 1.2%	728,392	↑ 719,592
OA	Olympic Airlines	772,502	↓ 1.2%	873,136	↑ 862,682
BE	FlyBE	760,311	↑ 1.2%	661,322	↑ 527,601
DE	Condor Flugdienst	748,971	↑ 1.2%	663,881	↓ 840,977
4U	Germanwings	739,788	↑ 1.2%	533,024	↑ 280,780
UX	Air Europa	738,904	↑ 1.2%	666,713	↑ 659,366
BD	bmi	720,639	↓ 1.1%	820,408	↓ 865,291
HF	Hapag Lloyd Flug	651,146	↓ 1.0%	862,333	↑ 853,494
OK	CSA	619,989	↓ 1.0%	646,799	↑ 515,552



Headlines

Intra European Seats Available (000's)

Carrier Type	Current Month	% of Market	Year to Date	% Growth	% of Market	2005 YTD
Low Cost	18,800	29.4%	80,340	24.5%	↑ 27.6%	64,511
Star Alliance	15,168	23.7%	69,908	1.4%	↑ 24.0%	68,943
Skyteam	10,040	15.7%	47,364	4.6%	↑ 16.3%	45,264
OneWorld	9,087	14.2%	43,078	-11.4%	↓ 14.8%	48,617
Other	10,891	17.0%	50,426	-8.9%	↓ 17.3%	55,378
Total Seats	63,986		291,115	3.0%	↑	282,714

Intra European Sectors Flown

Carrier Type	Current Month	% of Market	Year to Date	% Growth	% of Market	2005 YTD
Star Alliance	137,973	24.7%	641,625	0.7%	↑ 24.9%	637,322
Low Cost	122,581	22.0%	531,441	18.3%	↑ 20.7%	449,128
Skyteam	89,923	16.1%	425,089	-0.3%	↓ 16.5%	426,228
OneWorld	77,575	13.9%	355,910	4.9%	↑ 13.8%	339,131
Other	130,209	23.3%	618,309	-6.7%	↓ 24.0%	662,660
Total Sectors	558,261		2,572,374	2.3%	↑	2,514,469

Intra European Average Aircraft Size

Carrier Type	Current Month	Year to Date	% Growth	2005 YTD
Low Cost	153.4	151.2	5.2%	↑ 143.6
Star Alliance	109.9	109.0	0.7%	↑ 108.2
OneWorld	117.1	121.0	-9.3%	↓ 133.5
Skyteam	111.6	111.4	-2.3%	↓ 114.1
Other	83.6	81.6	-2.4%	↓ 83.6
European ave AC size	115.1	114.8	-1.5%	↓ 116.6

Alliance Airlines in this report

Star Alliance

Lufthansa, SAS, Spanair, SWISS, Austrian, TAP-Air Portugal, bmi, LOT - Polish Airlines, Blue1, Croatia Airlines , Adria Airways

OneWorld

British Airways, Iberia, Finnair, Aer Lingus

Skyteam

Air France, Alitalia, KLM, CSA, Aeroflot

Rolling 12 months seat Capacities

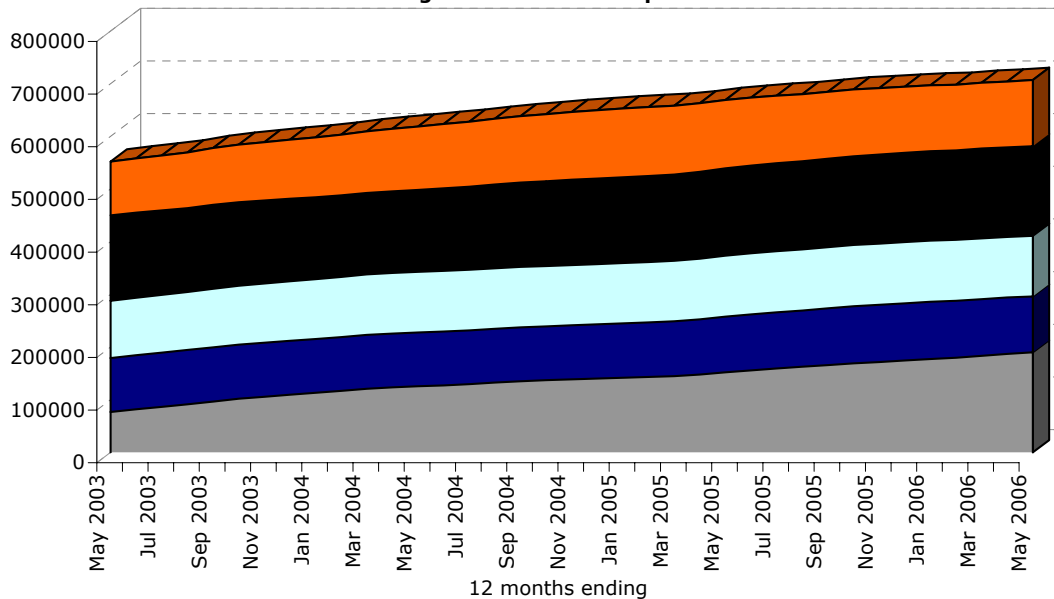


Chart Key

Low Cost	Star Alliance	Skyteam
OneWorld	Other	

2006 Market Share Growth

2006 Seat % by month

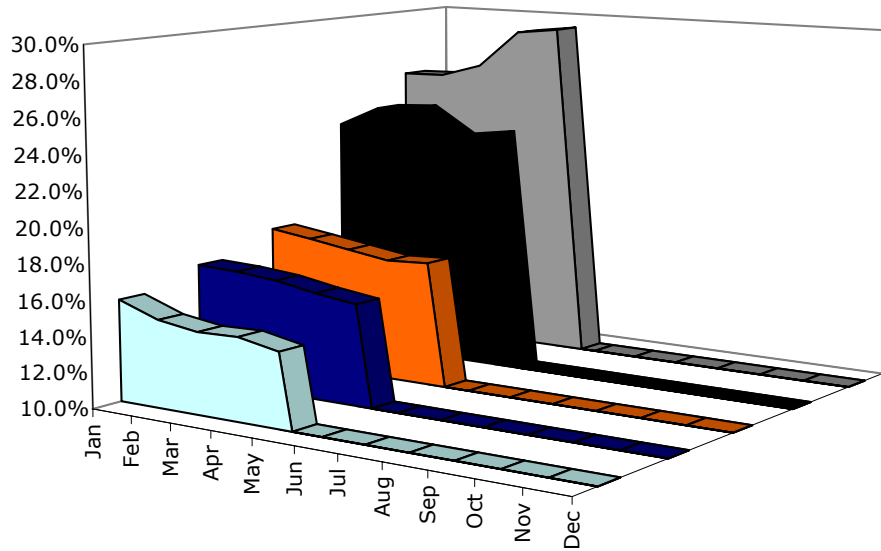


Chart Key



Average Aircraft size by Grouping

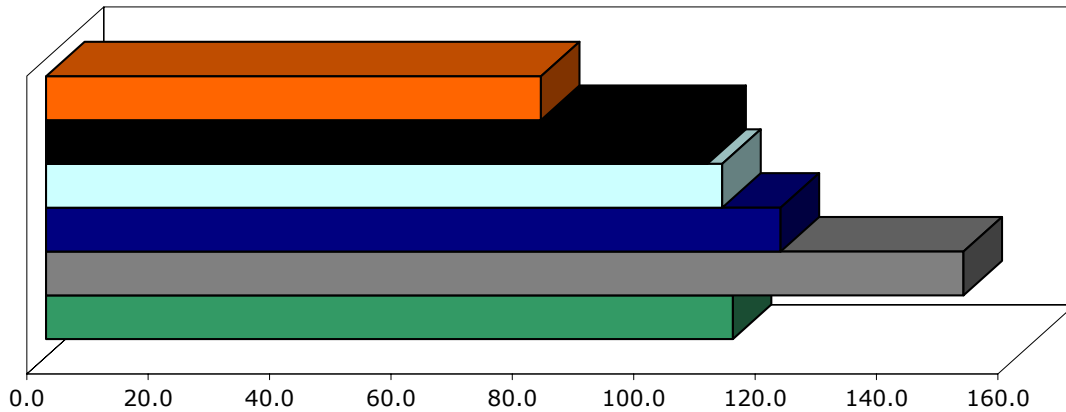


Chart Key





Intra European Destination and Airport Throughput Analysis: Month of May 2006

2006				2005				2004			
Low Cost				Growth				Growth			
Destinations Served		266	7.3% ↑	248		8.3%	229				
Most Served Low Cost Airports and Seats Available											
STN	Stansted	1,290,460	15.5% ↑	STN	Stansted	1,117,251		STN	Stansted	1,006,855	
PMI	Palma De Mallorca	559,794	25.3% ↑	PMI	Palma De Mallorca	446,833		PMI	Palma De Mallorca	220,481	
DUB	Dublin	504,912	46.9% ↑	DUB	Dublin	343,662		DUB	Dublin	342,248	
LGW	London Gatwick	488,000	13.7% ↑	LGW	London Gatwick	429,260		LGW	London Gatwick	314,873	
LTN	Luton	475,437	5.0% ↑	LTN	Luton	452,865		LTN	Luton	341,279	
BCN	Barcelona	430,698	66.0% ↑	BCN	Barcelona	259,434		BCN	Barcelona	214,026	
AMS	Amsterdam	421,497	21.0% ↑	AMS	Amsterdam	348,227		AMS	Amsterdam	324,458	
CGN	Cologne	408,914	6.4% ↑	CGN	Cologne	384,177		CGN	Cologne	291,670	
OSL	Oslo	345,373	44.4% ↑	OSL	Oslo	239,253		OSL	Oslo	179,111	
AGP	Malaga	341,038	3.6% ↑	AGP	Malaga	329,335		AGP	Malaga	246,744	
Star Alliance				Growth				Growth			
Destinations Served		234	6.4% ↑	220		3.3%	213				
Most Served Star Alliance Airports and Seats Available											
FRA	Frankfurt	1,620,244	2.7% ↑	FRA	Frankfurt	1,577,378		FRA	Frankfurt	1,614,307	
MUC	Munich	1,035,163	1.6% ↑	MUC	Munich	1,018,837		MUC	Munich	1,016,840	
OSL	Oslo	709,708	6.2% ↑	OSL	Oslo	668,220		OSL	Oslo	424,654	
CPH	Copenhagen	662,920	(2.2%) ↓	CPH	Copenhagen	677,881		CPH	Copenhagen	721,725	
LHR	London Heathrow	638,734	(7.1%) ↓	LHR	London Heathrow	687,823		LHR	London Heathrow	742,584	
ZRH	Zurich	634,691	13.0% ↑	ZRH	Zurich	561,546		ZRH	Zurich	533,194	
VIE	Vienna	599,935	5.2% ↑	VIE	Vienna	570,416		VIE	Vienna	571,662	
ARN	Stockholm	561,832	(9.1%) ↓	ARN	Stockholm	618,160		ARN	Stockholm	654,470	
MAD	Madrid	468,625	7.1% ↑	MAD	Madrid	437,363		MAD	Madrid	396,209	
BCN	Barcelona	385,960	15.7% ↑	BCN	Barcelona	333,492		BCN	Barcelona	296,594	
OneWorld				Growth				Growth			
Destinations Served		184	4.0% ↑	177		17.2%	151				
Most Served OneWorld Airports and Seats Available											
MAD	Madrid	1,227,970	(5.5%) ↓	MAD	Madrid	1,299,862		MAD	Madrid	1,185,551	
LHR	London Heathrow	1,181,075	(17.0%) ↓	LHR	London Heathrow	1,423,777		LHR	London Heathrow	1,298,189	
BCN	Barcelona	723,449	(10.9%) ↓	BCN	Barcelona	812,216		BCN	Barcelona	737,130	
LGW	London Gatwick	496,276	(10.5%) ↓	LGW	London Gatwick	554,465		LGW	London Gatwick	550,471	
HEL	Helsinki	442,096	(11.5%) ↓	HEL	Helsinki	499,392		HEL	Helsinki	268,965	
DUB	Dublin	421,723	10.7% ↑	DUB	Dublin	381,087		DUB	Dublin	331,406	
MAN	Manchester	188,010	(26.0%) ↓	MAN	Manchester	253,899		MAN	Manchester	253,164	
AGP	Malaga	166,983	(1.2%) ↓	AGP	Malaga	169,017		AGP	Malaga	149,692	
EDI	Edinburgh	147,438	(23.8%) ↓	EDI	Edinburgh	193,497		EDI	Edinburgh	158,171	
AMS	Amsterdam	134,815	0.6% ↑	AMS	Amsterdam	133,949		AMS	Amsterdam	132,028	
Skyteam				Growth				Growth			
Destinations Served		161	3.9% ↑	155		-1.3%	157				
Most Served Skyteam Airports and Seats Available											
CDG	Paris	1,337,594	0.5% ↑	CDG	Paris	1,331,189		CDG	Paris	1,356,378	
AMS	Amsterdam	873,964	(1.9%) ↓	AMS	Amsterdam	890,487		AMS	Amsterdam	862,122	
FCO	Rome	850,681	(6.4%) ↓	FCO	Rome	909,275		FCO	Rome	821,903	
ORY	Paris	743,099	0.2% ↑	ORY	Paris	741,402		ORY	Paris	761,904	
MXP	Milan	603,322	0.8% ↑	MXP	Milan	598,798		MXP	Milan	507,274	
PRG	Prague	356,258	(0.8%) ↓	PRG	Prague	359,185		PRG	Prague	296,776	
LYS	Lyon	242,688	3.4% ↑	LYS	Lyon	234,627		LYS	Lyon	220,631	
LIN	Milan	227,847	(5.1%) ↓	LIN	Milan	240,182		LIN	Milan	205,597	
SVO	Moscow (Sheremety)	227,449	2.4% ↑	SVO	Moscow (Sheremety)	222,042		SVO	Moscow (Sheremety)	203,717	
NCE	Nice	206,631	(0.2%) ↓	NCE	Nice	207,102		NCE	Nice	208,715	



Intra European Airline Performance Analysis

Low Cost			2006 YTD			2005 YTD		
Growth	Airline	Seats	Sectors	Aircraft Size	Seats	Sectors	Aircraft Size	
↑	Ryanair	18,513,748 ↑	101,723 ↑	182 ↑	14,245,585	83,976	170	
↑	easyJet	16,108,741 ↑	105,206 ↑	153 ↑	14,074,028	92,825	152	
↑	Air Berlin	8,013,823 ↑	49,211 ↑	163 ↑	5,475,562	34,905	157	
↑	FlyBE	3,353,787 ↑	37,307 ↑	90 ↑	2,842,087	33,613	85	
↑	Germanwings	3,189,000 ↑	22,996 ↑	139 ↓	2,229,407	15,976	140	
↑	dba	2,781,912 ↑	23,149 ↑	120 ↓	2,258,917	17,430	130	
↑	Norwegian Air Shuttle	2,287,459 ↑	15,683 ↑	146 ↓	1,531,060	10,345	148	
↑	Vueling Airlines	2,124,180 ↑	11,801 ↑	180 ↑	941,042	5,996	157	
↑	bmibaby	2,301,082 ↑	16,929 ↑	136 ↓	2,149,886	15,962	135	
↑	Hapag Lloyd Express	1,904,260 ↑	13,972 ↑	136 ↓	1,776,024	12,896	138	
Star Alliance								
Star Alliance			2006 YTD			2005 YTD		
Growth	Airline	Seats	Sectors	Aircraft Size	Seats	Sectors	Aircraft Size	
↑	Lufthansa	25,074,907 ↑	241,587 ↑	104 ↑	24,186,251	236,860	102	
↓	SAS	16,829,277 ↓	134,709 ↓	125 ↑	17,660,522	142,023	124	
↑	Spanair	5,397,952 ↑	37,009 ↑	146 ↓	4,646,189	30,386	153	
↑	SWISS	5,096,276 ↑	44,707 ↓	114 ↑	5,033,169	51,359	98	
↑	Austrian	4,619,873 ↑	57,452 ↑	80 ↓	4,449,669	54,311	82	
↑	TAP-Air Portugal	4,083,988 ↑	27,609 ↑	148 ↑	3,960,645	27,274	145	
↓	bmi	3,813,609 ↓	32,232 ↓	118 ↓	4,159,221	33,670	124	
↑	LOT - Polish Airlines	2,222,989 ↑	34,254 ↑	65 ↓	2,109,192	31,504	67	
↑	Blue1	1,107,719 ↑	14,425 ↑	77 ↑	875,886	12,755	69	
↓	Croatia Airlines	1,054,211 ↓	9,741 ↑	108 ↑	1,059,804	9,375	113	
↓	Adria Airways	607,078 ↓	7,900 ↑	77 ↓	802,858	7,805	103	
OneWorld								
OneWorld			2006 YTD			2005 YTD		
Growth	Airline	Seats	Sectors	Aircraft Size	Seats	Sectors	Aircraft Size	
↓	Iberia	17,373,554 ↓	143,668 ↑	121 ↓	17,890,207	138,305	129	
↓	British Airways	16,959,736 ↓	151,431 ↓	112 ↓	20,120,703	152,985	132	
↑	Aer Lingus	4,214,854 ↑	23,079 ↑	183 ↑	3,746,186	22,128	169	
↑	Finnair	4,530,297 ↑	37,732 ↑	120 ↓	3,506,544	25,713	136	
Skyteam								
Skyteam			2006 YTD			2005 YTD		
Growth	Airline	Seats	Sectors	Aircraft Size	Seats	Sectors	Aircraft Size	
↓	Air France	22,677,382 ↓	213,237 ↓	106 ↓	22,814,712	213,730	107	
↓	Alitalia	13,045,002 ↓	101,360 ↓	129 ↓	13,711,162	105,240	130	
↓	KLM	7,154,060 ↓	69,361 ↑	103 ↓	7,667,150	67,534	114	
↓	CSA	2,858,444 ↓	28,750 ↑	99 ↓	2,884,790	28,207	102	
↑	Aeroflot	1,628,788 ↑	12,381 ↑	132 ↓	1,538,754	11,517	134	
Other								
Other			2006 YTD			2005 YTD		
Growth	Airline	Seats	Sectors	Aircraft Size	Seats	Sectors	Aircraft Size	
↓	Air Europa	3,580,917 ↓	19,485 ↓	184 ↑	3,632,956	21,498	169	
↓	Air One	3,584,644 ↓	27,858 ↓	129 ↓	4,323,852	28,015	154	
↓	Olympic Airlines	2,616,162 ↓	38,050 ↑	69 ↓	3,178,175	29,649	107	
↓	Wideroe	2,384,226 ↓	67,307 ↓	35 ↓	2,751,559	67,930	41	
↑	Turkish Airlines	2,724,520 ↑	15,970 ↑	171 ↑	2,186,071	13,529	162	
↓	Aegean Airlines	2,135,728 ↓	18,521 ↑	115 ↓	2,401,754	18,397	131	
↓	SN Brussels Airlines	1,683,631 ↓	23,022 ↑	73 ↓	2,092,181	22,618	93	
↑	Malev-Hungarian Airlines	1,615,492 ↑	19,071 ↑	85 ↓	1,519,538	17,731	86	
↑	Binter Canarias	1,528,335 ↑	21,810 ↑	70 ↓	1,521,183	21,081	72	
↑	Royal Air Maroc	1,439,035 ↑	10,526 ↑	137 ↓	1,412,113	10,111	140	

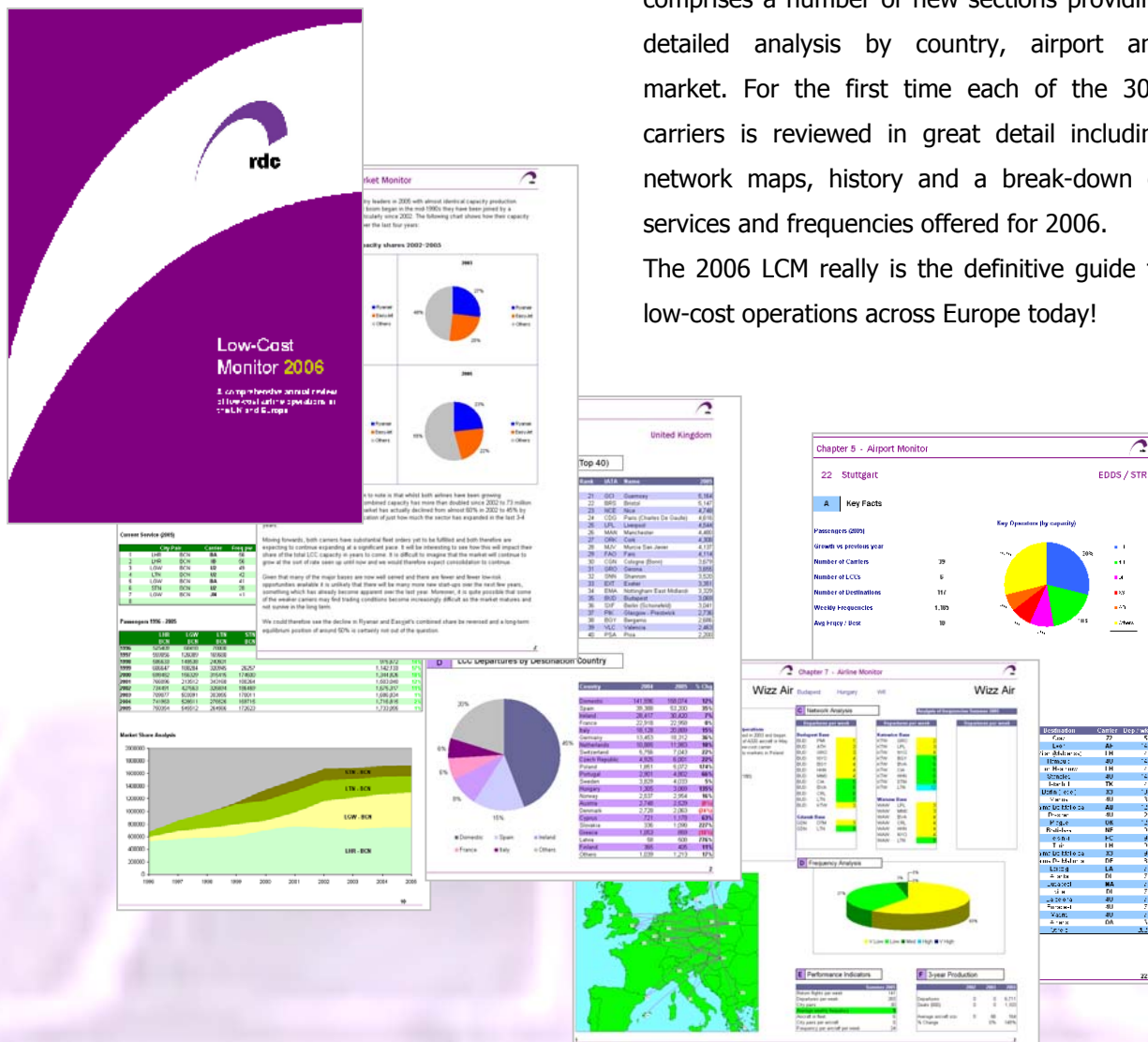
innovative *management information*

low cost monitor 2006

The fourth edition of rdc's popular Low Cost Monitor series is the most comprehensive review of low-cost operations across Europe ever produced. The 200-page report is essential reading to any aviation professional in today's fast-moving and ever-changing market analysing, in detail, the activities of over 30 carriers across 32 European countries and reviewing their effect on numerous markets after a decade of service. The report begins with its customary overview of the European market and also

comprises a number of new sections providing detailed analysis by country, airport and market. For the first time each of the 30+ carriers is reviewed in great detail including network maps, history and a break-down of services and frequencies offered for 2006.

The 2006 LCM really is the definitive guide to low-cost operations across Europe today!



The Low Cost Monitor 2006 has now been published! Available from only GBP299 and in hard-copy or PDF form, the Low-Cost Monitor 2006 can be ordered from chris@routedev.com. Reserve your copy today!

