


**Top 25 Airports by Departing Seat Capacity**

		Mar 2006	% of Europe	Mar 2005	Mar 2004
LHR	London Heathrow	2,173,078	↓ 3.5%	2,407,639	↓ 2,409,014
MAD	Madrid	2,143,296	↓ 3.5%	2,171,600	↑ 2,011,833
CDG	Paris	2,025,953	↑ 3.3%	1,985,941	↓ 2,162,782
FRA	Frankfurt	2,011,243	↑ 3.3%	1,974,167	↓ 2,029,673
BCN	Barcelona	1,700,831	↑ 2.8%	1,620,331	↑ 1,468,129
MUC	Munich	1,586,123	↑ 2.6%	1,478,422	↓ 1,503,202
AMS	Amsterdam	1,580,163	↓ 2.6%	1,679,682	↑ 1,532,099
FCO	Rome	1,561,028	↓ 2.5%	1,675,433	↑ 1,534,899
ORY	Paris	1,230,246	↓ 2.0%	1,230,352	↓ 1,230,607
STN	Stansted	1,148,273	↑ 1.9%	964,007	↓ 1,023,903
CPH	Copenhagen	1,164,980	↑ 1.9%	1,133,692	↓ 1,137,963
LGW	London Gatwick	1,113,273	↓ 1.8%	1,133,902	↑ 906,809
ARN	Stockholm	1,050,373	↑ 1.7%	1,031,110	↓ 1,062,433
MXP	Milan	905,842	↑ 1.5%	848,703	↑ 838,636
DUB	Dublin	891,555	↓ 1.5%	928,601	↑ 808,267
DUS	Dusseldorf	877,026	↑ 1.4%	778,676	↓ 806,336
ZRH	Zurich	872,065	↑ 1.4%	847,733	↑ 831,312
VIE	Vienna	845,211	↑ 1.4%	825,035	↑ 783,240
BRU	Brussels	833,882	↑ 1.4%	807,577	↓ 858,119
HEL	Helsinki	759,521	↑ 1.2%	431,147	↑ 423,685
PMI	Palma De Mallorca	753,839	↑ 1.2%	585,346	↑ 550,925
ATH	Athens	753,059	↑ 1.2%	640,603	↓ 790,570
HAM	Hamburg	738,996	↑ 1.2%	551,854	↓ 606,925
MAN	Manchester	729,111	↓ 1.2%	738,683	↑ 632,379
TXL	Berlin	704,295	↑ 1.1%	650,941	↓ 685,298

**Top 25 Airlines by Departing Seat Capacity**

		Mar 2006	% of Europe	Mar 2005	Mar 2004
LH	Lufthansa	5,331,803	↑ 9.3%	4,904,340	↓ 5,170,858
AF	Air France	4,697,775	↓ 8.2%	4,731,602	↓ 4,811,778
SK	SAS	3,693,211	↑ 6.5%	3,524,582	↑ 2,935,438
FR	Ryanair	3,552,218	↑ 6.2%	2,781,606	↑ 2,664,044
BA	British Airways	3,482,017	↓ 6.1%	4,220,360	↑ 3,983,372
IB	Iberia	3,349,263	↓ 5.9%	3,721,322	↑ 3,521,387
U2	easyJet	2,927,450	↑ 5.1%	2,671,098	↑ 2,096,383
AZ	Alitalia	2,684,297	↓ 4.7%	2,761,694	↑ 2,831,258
AB	Air Berlin	1,648,888	↑ 2.9%	590,436	↓ 802,854
KL	KLM	1,505,580	↓ 2.6%	1,786,906	↑ 1,454,048
JK	Spanair	1,146,112	↑ 2.0%	952,573	↑ 859,932
LX	SWISS	1,044,984	↑ 1.8%	1,028,105	↓ 1,065,623
AY	Finnair	1,001,091	↑ 1.8%	515,623	↓ 534,578
OS	Austrian	940,089	↑ 1.6%	914,967	↑ 989,274
EI	Aer Lingus	847,321	↑ 1.5%	793,756	↓ 622,752
TP	TAP-Air Portugal	820,462	↑ 1.4%	797,338	↑ 746,354
BD	bmi	809,505	↓ 1.4%	859,430	↑ 879,114
UX	Air Europa	768,099	↓ 1.3%	798,660	↑ 617,569
AP	Air One	749,192	↓ 1.3%	1,042,800	↑ 575,952
OA	Olympic Airlines	707,375	↑ 1.2%	367,823	↓ 786,830
BE	FlyBE	677,249	↑ 1.2%	586,421	↓ 661,328
4U	Germanwings	640,376	↑ 1.1%	438,097	↑ 280,810
DI	dba	600,428	↑ 1.1%	433,800	↓ 467,024
WF	Wideroe	596,593	↑ 1.0%	549,609	↓ 594,915
OK	CSA	581,873	↓ 1.0%	600,376	↑ 452,722



**Headlines**

**Intra European Seats Available (000's)**

Carrier Type	Current Month	% of Market	Year to Date	% Growth	% of Market	2005 YTD
Low Cost	15,896	26.7%	43,897	24.8%	↑ 26.2%	35,180
Star Alliance	13,777	23.2%	37,930	3.3%	↑ 22.7%	36,701
Skyteam	9,470	15.9%	26,903	2.5%	↑ 16.1%	26,251
OneWorld	8,680	14.6%	25,258	-8.9%	↓ 15.1%	27,739
Other	11,662	19.6%	33,441	1.0%	↑ 20.0%	33,098
<b>Total Seats</b>	<b>59,485</b>		<b>167,427</b>	<b>5.3%</b>	<b>↑</b>	<b>158,969</b>

**Intra European Sectors Flown**

Carrier Type	Current Month	% of Market	Year to Date	% Growth	% of Market	2005 YTD
Star Alliance	127,097	24.0%	352,214	3.8%	↑ 23.5%	339,406
Low Cost	105,999	20.0%	293,826	19.4%	↑ 19.6%	246,010
Skyteam	85,688	16.2%	242,949	-0.1%	↓ 16.2%	243,259
OneWorld	70,049	13.2%	204,646	3.0%	↑ 13.7%	198,668
Other	140,888	26.6%	402,843	1.7%	↑ 26.9%	396,046
<b>Total Sectors</b>	<b>529,721</b>		<b>1,496,478</b>	<b>5.1%</b>	<b>↑</b>	<b>1,423,389</b>

**Intra European Average Aircraft Size**

Carrier Type	Current Month	Year to Date	% Growth	2005 YTD
Low Cost	150.0	149.4	4.5%	↑ 143.0
Star Alliance	108.4	107.7	-0.4%	↓ 108.1
OneWorld	123.9	123.4	-6.6%	↓ 132.1
Skyteam	110.5	110.7	-2.9%	↓ 114.0
Other	82.8	83.0	-0.7%	↓ 83.6
<b>European ave AC size</b>	<b>115.1</b>	<b>114.9</b>	<b>-1.1%</b>	<b>↓ 116.2</b>

**Alliance Airlines in this report**

Star Alliance

Lufthansa, SAS, Spanair, Austrian, bmi, TAP-Air Portugal, LOT - Polish Airlines, Croatia Airlines, Blue1, Adria Airways

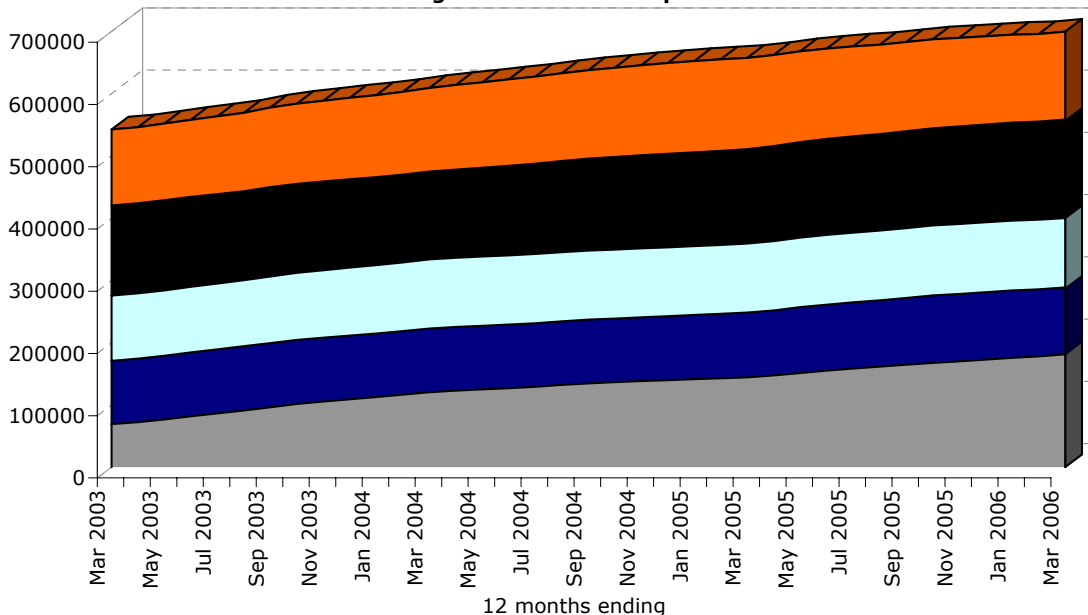
OneWorld

British Airways, Iberia, Finnair, Aer Lingus

Skyteam

Air France, Alitalia, KLM, CSA

**Rolling 12 months seat Capacities**



**Chart Key**

Low Cost	Star Alliance	Skyteam
OneWorld	Other	



2006 Market Share Growth

2006 Seat % by month

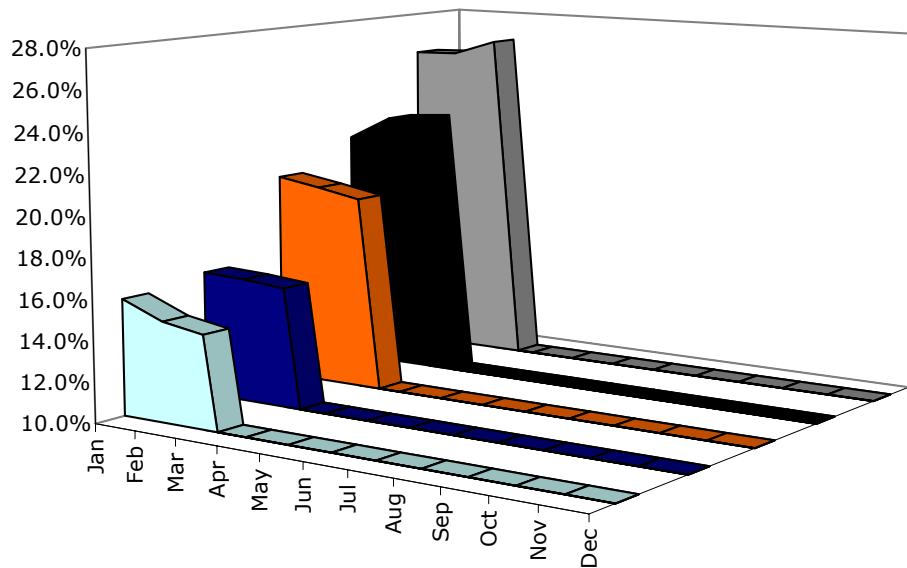


Chart Key



Average Aircraft size by Grouping

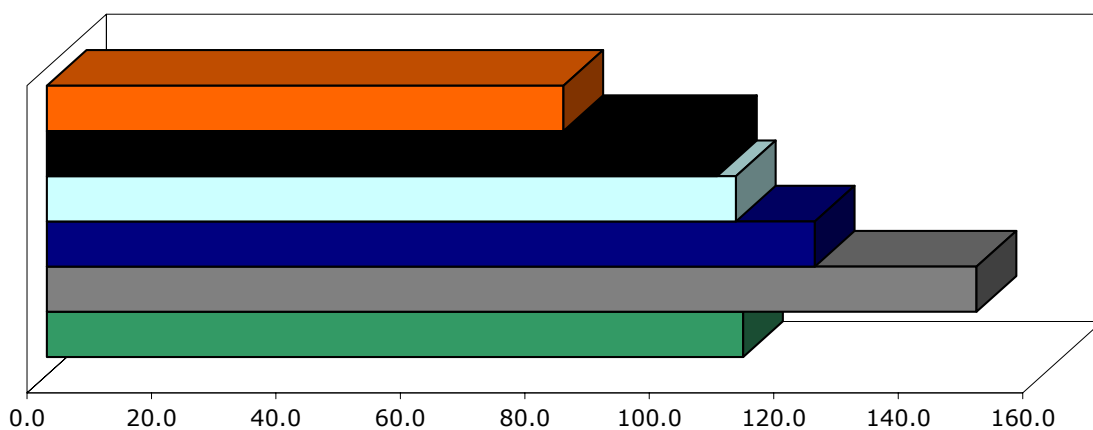


Chart Key



## Intra European Destination and Airport Throughput Analysis: Month of March 2006

2006				2005				2004			
<u>Low Cost</u>				<u>Growth</u>				<u>Growth</u>			
Destinations Served		239	8.1%	↑	221		3.8%	213			
Most Served Low Cost Airports and Seats Available											
STN	Stansted	1,121,754	19.4%	↑	STN	Stansted	939,409	STN	Stansted	997,078	
LGW	London Gatwick	452,854	18.0%	↑	LGW	London Gatwick	383,882	LGW	London Gatwick	285,831	
LTN	Luton	451,939	8.1%	↑	LTN	Luton	418,223	LTN	Luton	323,989	
PMI	Palma De Mallorca	364,489	79.8%	↑	PMI	Palma De Mallorca	202,747	PMI	Palma De Mallorca	134,434	
DUB	Dublin	340,138	(8.6%)	↓	DUB	Dublin	372,178	DUB	Dublin	333,200	
BCN	Barcelona	338,250	41.9%	↑	BCN	Barcelona	238,398	BCN	Barcelona	204,330	
CGN	Cologne	330,006	4.1%	↑	CGN	Cologne	317,017	CGN	Cologne	269,045	
AMS	Amsterdam	318,886	23.1%	↑	AMS	Amsterdam	259,073	AMS	Amsterdam	254,929	
OSL	Oslo	272,076	54.8%	↑	OSL	Oslo	175,801	OSL	Oslo	162,263	
TXL	Berlin	267,558	23.4%	↑	TXL	Berlin	216,897	TXL	Berlin	252,492	
<u>Star Alliance</u>											
<u>Growth</u>				<u>Growth</u>							
Destinations Served		221	6.8%	↑	207		3.0%	201			
Most Served Star Alliance Airports and Seats Available											
FRA	Frankfurt	1,520,844	3.7%	↑	FRA	Frankfurt	1,466,920	FRA	Frankfurt	1,541,525	
MUC	Munich	971,752	9.3%	↑	MUC	Munich	889,395	MUC	Munich	886,455	
OSL	Oslo	713,884	15.9%	↑	OSL	Oslo	616,052	OSL	Oslo	463,231	
CPH	Copenhagen	655,286	(3.6%)	↓	CPH	Copenhagen	679,646	CPH	Copenhagen	715,902	
LHR	London Heathrow	649,285	(1.2%)	↓	LHR	London Heathrow	657,225	LHR	London Heathrow	673,585	
ARN	Stockholm	576,470	2.5%	↑	ARN	Stockholm	562,282	ARN	Stockholm	681,340	
VIE	Vienna	526,554	1.7%	↑	VIE	Vienna	517,724	VIE	Vienna	537,260	
MAD	Madrid	452,343	12.5%	↑	MAD	Madrid	402,031	MAD	Madrid	374,802	
BCN	Barcelona	349,249	22.5%	↑	BCN	Barcelona	285,166	BCN	Barcelona	251,906	
DUS	Dusseldorf	348,596	18.4%	↑	DUS	Dusseldorf	294,473	DUS	Dusseldorf	328,772	
<u>OneWorld</u>											
<u>Growth</u>				<u>Growth</u>							
Destinations Served		175	13.6%	↑	154		3.4%	149			
Most Served OneWorld Airports and Seats Available											
LHR	London Heathrow	1,178,399	(14.5%)	↓	LHR	London Heathrow	1,378,743	LHR	London Heathrow	1,316,586	
MAD	Madrid	1,142,407	(9.7%)	↓	MAD	Madrid	1,264,534	MAD	Madrid	1,204,617	
BCN	Barcelona	690,342	(11.7%)	↓	BCN	Barcelona	781,828	BCN	Barcelona	740,838	
HEL	Helsinki	495,014	97.9%	↑	HEL	Helsinki	250,119	HEL	Helsinki	260,541	
LGW	London Gatwick	456,585	(24.9%)	↓	LGW	London Gatwick	608,180	LGW	London Gatwick	502,365	
DUB	Dublin	389,902	2.5%	↑	DUB	Dublin	380,493	DUB	Dublin	296,517	
MAN	Manchester	200,754	(27.0%)	↓	MAN	Manchester	274,987	MAN	Manchester	268,485	
EDI	Edinburgh	146,950	(18.3%)	↓	EDI	Edinburgh	179,804	EDI	Edinburgh	166,590	
GLA	Glasgow	141,026	(15.0%)	↓	GLA	Glasgow	165,850	GLA	Glasgow	166,982	
AGP	Malaga	140,059	(2.3%)	↓	AGP	Malaga	143,313	AGP	Malaga	124,240	
<u>Skyteam</u>											
<u>Growth</u>				<u>Growth</u>							
Destinations Served		175	13.6%	↑	154		3.4%	149			
Most Served Skyteam Airports and Seats Available											
LHR	London Heathrow	1,178,399	(14.5%)	↓	LHR	London Heathrow	1,378,743	LHR	London Heathrow	1,316,586	
MAD	Madrid	1,142,407	(9.7%)	↓	MAD	Madrid	1,264,534	MAD	Madrid	1,204,617	
BCN	Barcelona	690,342	(11.7%)	↓	BCN	Barcelona	781,828	BCN	Barcelona	740,838	
HEL	Helsinki	495,014	97.9%	↑	HEL	Helsinki	250,119	HEL	Helsinki	260,541	
LGW	London Gatwick	456,585	(24.9%)	↓	LGW	London Gatwick	608,180	LGW	London Gatwick	502,365	
DUB	Dublin	389,902	2.5%	↑	DUB	Dublin	380,493	DUB	Dublin	296,517	
MAN	Manchester	200,754	(27.0%)	↓	MAN	Manchester	274,987	MAN	Manchester	268,485	
EDI	Edinburgh	146,950	(18.3%)	↓	EDI	Edinburgh	179,804	EDI	Edinburgh	166,590	
GLA	Glasgow	141,026	(15.0%)	↓	GLA	Glasgow	165,850	GLA	Glasgow	166,982	
AGP	Malaga	140,059	(2.3%)	↓	AGP	Malaga	143,313	AGP	Malaga	124,240	





## Intra European Airline Performance Analysis

Low Cost		2006 YTD			2005 YTD		
Growth	Airline	Seats	Sectors	Aircraft Size	Seats	Sectors	Aircraft Size
↑	Ryanair	9,845,881	55,767	177	7,750,432	47,132	164
↑	easyJet	9,230,938	60,363	153	8,145,239	53,790	151
↑	Air Berlin	4,473,151	27,396	163	2,632,358	15,431	171
↑	FlyBE	1,887,982	20,898	90	1,588,123	19,524	81
↑	Germanwings	1,777,698	12,907	138	1,183,663	8,703	136
↑	dba	1,682,296	13,984	120	1,170,376	8,629	136
↑	Meridiana	1,515,271	10,378	146	1,490,649	9,859	151
↑	Norwegian Air Shuttle	1,258,843	8,731	144	808,080	5,460	148
↓	bmibaby	1,226,402	9,311	132	1,247,270	9,456	132
↑	Vueling Airlines	1,000,620	5,559	180	493,428	3,163	156

Star Alliance		2006 YTD			2005 YTD		
Growth	Airline	Seats	Sectors	Aircraft Size	Seats	Sectors	Aircraft Size
↑	Lufthansa	14,456,643	141,531	102	13,697,723	137,101	100
↓	SAS	10,088,908	81,107	124	10,280,659	83,312	123
↑	Spanair	3,116,178	21,277	146	2,604,680	16,745	156
↑	Austrian	2,621,973	33,234	79	2,538,344	31,393	81
↓	bmi	2,370,298	19,597	121	2,521,646	20,023	126
↑	TAP-Air Portugal	2,375,942	16,037	148	2,342,158	16,270	144
↑	LOT - Polish Airlines	1,343,881	20,763	65	1,209,444	18,374	66
↑	Croatia Airlines	605,220	5,613	108	535,158	4,731	113
↑	Blue1	592,919	8,428	70	451,572	6,724	67
↓	Adria Airways	357,750	4,627	77	520,010	4,733	110

OneWorld		2006 YTD			2005 YTD		
Growth	Airline	Seats	Sectors	Aircraft Size	Seats	Sectors	Aircraft Size
↓	British Airways	10,037,588	89,506	112	11,878,073	89,436	133
↓	Iberia	10,044,188	79,094	127	10,801,908	86,620	125
↑	Finnair	2,751,181	22,750	121	1,455,407	10,031	145
↑	Aer Lingus	2,424,606	13,296	182	2,115,324	12,581	168

Skyteam		2006 YTD			2005 YTD		
Growth	Airline	Seats	Sectors	Aircraft Size	Seats	Sectors	Aircraft Size
↓	Air France	13,470,020	127,147	106	13,603,978	127,521	107
↓	Alitalia	7,698,094	59,811	129	7,960,648	61,314	130
↓	KLM	4,080,482	39,266	104	4,542,673	38,458	118
↑	CSA	1,654,407	16,725	99	1,631,936	15,966	102

Other		2006 YTD			2005 YTD		
Growth	Airline	Seats	Sectors	Aircraft Size	Seats	Sectors	Aircraft Size
↓	Air Europa	2,133,369	11,602	184	2,314,800	12,860	180
↓	Air One	2,136,190	16,383	130	2,810,878	17,059	165
↑	Olympic Airlines	2,057,901	21,463	96	1,496,455	12,731	118
↑	Wideroe	1,693,033	41,882	40	1,628,147	40,191	41
↑	Turkish Airlines	1,472,018	8,948	165	1,250,652	7,770	161
↓	Aegean Airlines	1,286,268	10,362	124	1,405,022	10,668	132
↑	SN Brussels Airlines	1,317,144	13,887	95	1,221,610	13,252	92
↑	Malev-Hungarian Airlines	944,690	10,593	89	844,790	10,205	83
↑	Aeroflot	905,414	7,188	126	855,224	6,412	133
↑	Binter Canarias	940,080	12,866	73	906,390	12,558	72