



Top 25 Airports by Capacity

		Jan 2006	% of Europe	Jan 2005	Jan 2004
MAD	Madrid	2,025,131	↑ 3.5%	1,983,191	↑ 1,871,253
LHR	London Heathrow	1,856,788	↓ 3.2%	2,090,804	↑ 2,037,599
CDG	Paris	1,593,024	↓ 2.8%	1,617,644	↓ 1,731,526
BCN	Barcelona	1,495,487	↑ 2.6%	1,436,724	↑ 1,313,273
FRA	Frankfurt	1,458,680	↓ 2.5%	1,533,176	↓ 1,659,227
FCO	Rome	1,362,873	↓ 2.4%	1,415,079	↑ 1,335,275
AMS	Amsterdam	1,238,600	↑ 2.2%	1,187,911	↓ 1,213,232
MUC	Munich	1,229,480	↑ 2.1%	1,106,156	↓ 1,230,214
ORY	Paris	1,044,570	↑ 1.8%	1,025,361	↑ 1,014,066
STN	Stansted	1,011,077	↑ 1.8%	950,308	↓ 953,101
LGW	London Gatwick	971,924	↑ 1.7%	849,176	↑ 792,551
DUB	Dublin	824,021	↑ 1.4%	800,453	↑ 767,010
CPH	Copenhagen	819,144	↓ 1.4%	833,755	↑ 792,386
ARN	Stockholm	778,699	↓ 1.4%	831,985	↓ 768,960
ZRH	Zurich	709,993	↑ 1.2%	663,655	↓ 674,562
MXP	Milan	695,513	↑ 1.2%	678,632	↓ 730,821
DUS	Dusseldorf	691,106	↑ 1.2%	616,579	↓ 654,424
ATH	Athens	655,218	↓ 1.1%	733,728	↑ 713,560
BRU	Brussels	647,260	↑ 1.1%	640,730	↓ 698,125
MAN	Manchester	639,398	↑ 1.1%	608,454	↑ 565,867
PMI	Palma De Mallorca	625,818	↑ 1.1%	598,257	↓ 460,351
HAM	Hamburg	593,097	↑ 1.0%	459,675	↓ 493,339
HEL	Helsinki	592,951	↑ 1.0%	356,091	↑ 339,887
OSL	Oslo	575,162	↓ 1.0%	709,026	↑ 502,266
TXL	Berlin	573,096	↑ 1.0%	541,446	↓ 593,330

Top 25 Airlines by Capacity

		Jan 2006	% of Europe	Jan 2005	Jan 2004
AF	Air France	4,581,446	↓ 8.4%	4,619,190	↓ 4,686,726
LH	Lufthansa	4,497,804	↑ 8.2%	4,252,705	↓ 4,848,545
IB	Iberia	3,675,214	↑ 6.7%	3,646,732	↓ 3,437,690
BA	British Airways	3,426,483	↓ 6.3%	3,879,425	↑ 3,872,563
SK	SAS	3,260,465	↓ 6.0%	3,440,922	↑ 2,437,403
FR	Ryanair	3,197,466	↑ 5.8%	2,633,638	↑ 2,464,992
U2	easyJet	2,822,226	↑ 5.2%	2,551,822	↑ 1,946,089
AZ	Alitalia	2,590,991	↓ 4.7%	2,692,122	↓ 2,730,921
AB	Air Berlin	1,400,087	↑ 2.6%	964,622	↑ 754,528
KL	KLM	1,316,955	↑ 2.4%	1,292,930	↓ 1,294,945
LX	SWISS	996,831	↓ 1.8%	998,877	↓ 1,038,195
JK	Spanair	951,144	↑ 1.7%	788,566	↑ 741,215
AY	Finnair	882,583	↑ 1.6%	477,127	↓ 470,410
OS	Austrian	881,958	↑ 1.6%	822,804	↓ 896,019
TP	TAP-Air Portugal	827,110	↓ 1.5%	832,580	↑ 776,453
EI	Aer Lingus	825,320	↑ 1.5%	689,113	↑ 606,681
BD	bmi	814,938	↓ 1.5%	871,184	↓ 847,192
UX	Air Europa	744,638	↓ 1.4%	795,420	↑ 593,039
AP	Air One	719,446	↓ 1.3%	816,058	↑ 557,118
OA	Olympic Airlines	709,878	↓ 1.3%	794,784	↑ 784,558
BE	FlyBE	627,973	↑ 1.1%	500,783	↓ 546,119
4U	Germanwings	590,338	↑ 1.1%	387,948	↑ 215,388
WF	Wideroe	570,812	↑ 1.0%	553,133	↓ 562,191
OK	CSA	566,047	↑ 1.0%	534,214	↑ 422,066
DI	dba	565,944	↑ 1.0%	349,520	↓ 425,272



Headlines

Intra European Seats Available (000's)

Carrier Type	Current Month	% of Market	Year to Date	% Growth		% of Market	2005 YTD
Low Cost	14,494	25.9%	14,494	23.9%	↑	25.9%	11,694
Star Alliance	12,193	21.8%	12,193	2.3%	↑	21.8%	11,924
OneWorld	8,810	15.8%	8,810	1.3%	↑	15.8%	8,692
Skyteam	9,055	16.2%	9,055	-0.9%	↓	16.2%	9,138
Other	11,376	20.3%	11,376	2.5%	↑	20.3%	11,098
Total Seats	55,928		55,928	6.4%	↑		52,546

Intra European Sectors Flown

Carrier Type	Current Month	% of Market	Year to Date	% Growth		% of Market	2005 YTD
Low Cost	97,022	19.4%	97,022	18.0%	↑	19.4%	82,206
Star Alliance	113,756	22.7%	113,756	3.4%	↑	22.7%	110,001
OneWorld	72,929	14.5%	72,929	9.1%	↑	14.5%	66,819
Skyteam	81,676	16.3%	81,676	0.4%	↑	16.3%	81,369
Other	135,938	27.1%	135,938	3.1%	↑	27.1%	131,883
Total Sectors	501,321		501,321	6.1%	↑		472,278

Intra European Average Aircraft Size

Carrier Type	Current Month	Year to Date	% Growth	2005 YTD
Low Cost	149.4	149.4	5.0%	142.3
Star Alliance	107.2	107.2	-1.1%	108.4
OneWorld	120.8	120.8	-7.1%	130.1
Skyteam	110.9	110.9	-1.3%	112.3
Other	83.7	83.7	-0.5%	84.1
European ave AC size	114.4	114.4	-0.9%	115.4

Alliance Airlines in this report

Star Alliance

Lufthansa, SAS, Spanair, Austrian, bmi, TAP-Air Portugal, LOT - Polish Airlines, Croatia Airlines, Blue1, Adria Airways

OneWorld

British Airways, Iberia, Finnair, Aer Lingus

Skyteam

Air France, Alitalia, KLM, CSA

Rolling 12 months seat Capacities

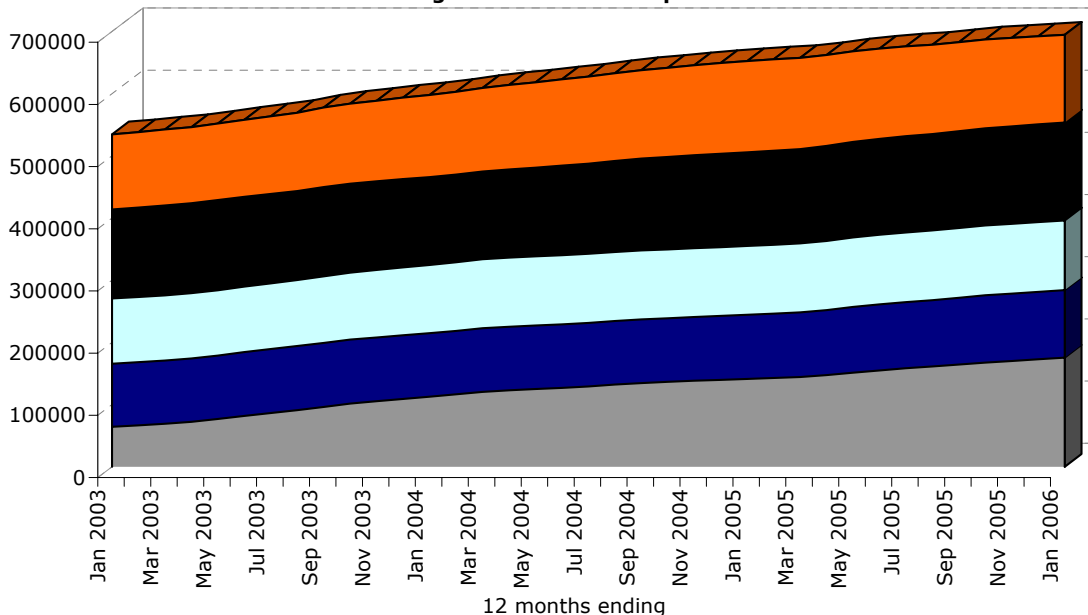


Chart Key

Low Cost	Star Alliance	Skyteam
OneWorld	Other	



2006 Market Share Growth

2006 Seat % by month

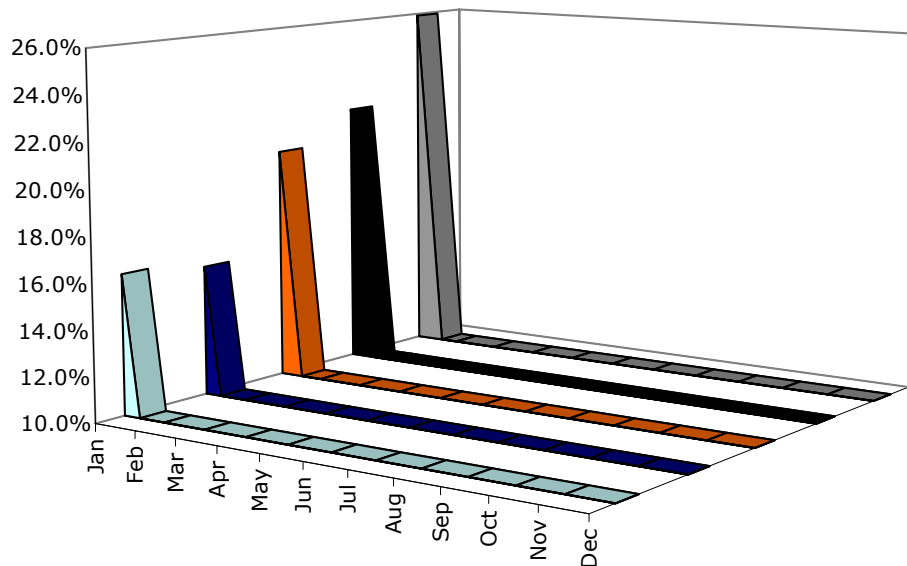


Chart Key



Average Aircraft size by Alliance

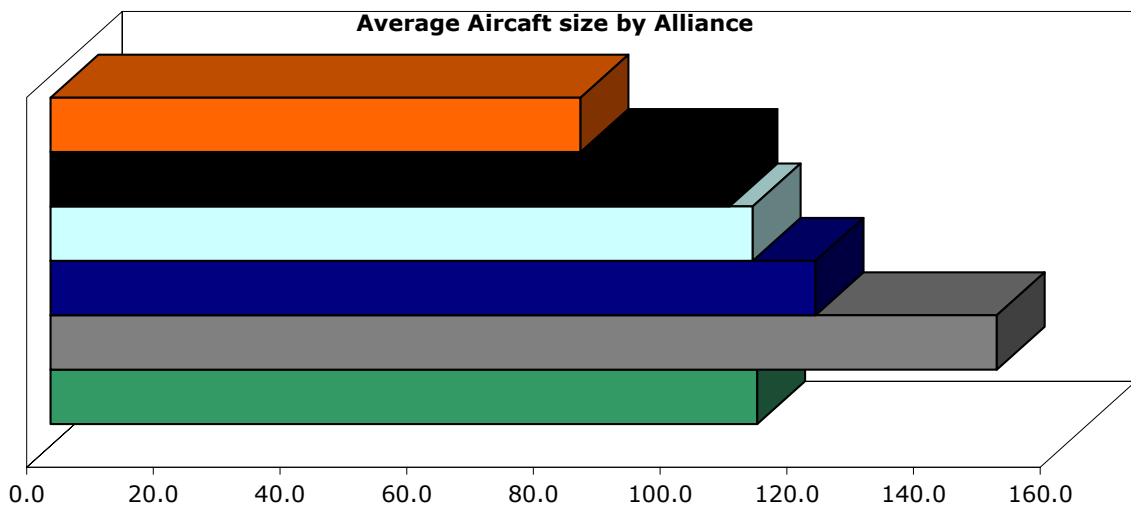


Chart Key





Intra European Destination and Airport Throughput Analysis: Month of January 2006

2006				2005				2004			
<u>Low Cost</u>				<u>Growth</u>				<u>Growth</u>			
Destinations Served		233	10.4%	↑	211		5.5%	200			
Most Served Low Cost Airports and Seats Available											
STN	Stansted	940,134	12.8%	↑	STN	Stansted	833,650	STN	Stansted	900,104	
LTN	Luton	363,581	(0.9%)	↓	LTN	Luton	366,957	LTN	Luton	301,386	
LGW	London Gatwick	359,039	7.1%	↑	LGW	London Gatwick	335,091	DUB	Dublin	297,547	
PMI	Palma De Mallorca	298,691	12.7%	↑	DUB	Dublin	330,624	LGW	London Gatwick	270,117	
DUB	Dublin	295,821	(10.5%)	↓	CGN	Cologne	265,627	AMS	Amsterdam	221,310	
BCN	Barcelona	270,212	26.6%	↑	PMI	Palma De Mallorca	265,042	CGN	Cologne	213,312	
CGN	Cologne	263,625	(0.8%)	↓	TXL	Berlin	234,372	TXL	Berlin	212,458	
AMS	Amsterdam	255,767	14.9%	↑	AMS	Amsterdam	222,631	CDG	Paris	179,006	
TXL	Berlin	226,580	(3.3%)	↓	BCN	Barcelona	213,446	BFS	Belfast Internationa	177,279	
AGP	Malaga	216,112	20.2%	↑	BFS	Belfast Internationa	206,655	VCE	Venice	177,265	
<u>Star Alliance</u>				<u>Growth</u>				<u>Growth</u>			
Destinations Served		216	4.9%	↑	206		10.2%	187			
Most Served Star Alliance Airports and Seats Available											
FRA	Frankfurt	1,319,700	(1.1%)	↓	FRA	Frankfurt	1,334,653	FRA	Frankfurt	1,421,537	
MUC	Munich	848,013	2.4%	↑	MUC	Munich	827,753	MUC	Munich	807,204	
OSL	Oslo	593,995	2.2%	↑	CPH	Copenhagen	636,873	CPH	Copenhagen	642,958	
LHR	London Heathrow	593,913	(2.8%)	↓	LHR	London Heathrow	611,223	LHR	London Heathrow	624,935	
CPH	Copenhagen	578,499	(9.2%)	↓	OSL	Oslo	581,194	ARN	Stockholm	584,600	
ARN	Stockholm	494,810	(6.6%)	↓	ARN	Stockholm	529,575	VIE	Vienna	477,287	
VIE	Vienna	450,896	(1.2%)	↓	VIE	Vienna	456,351	OSL	Oslo	404,508	
MAD	Madrid	409,329	11.5%	↑	MAD	Madrid	367,185	MAD	Madrid	343,115	
BCN	Barcelona	308,601	19.3%	↑	LIS	Lisbon	291,014	DUS	Dusseldorf	299,528	
DUS	Dusseldorf	302,005	6.5%	↑	DUS	Dusseldorf	283,483	LIS	Lisbon	295,608	
<u>OneWorld</u>				<u>Growth</u>				<u>Growth</u>			
Destinations Served		163	13.2%	↑	144		-4.6%	151			
Most Served OneWorld Airports and Seats Available											
LHR	London Heathrow	1,068,552	(13.8%)	↓	LHR	London Heathrow	1,239,351	LHR	London Heathrow	1,212,049	
MAD	Madrid	1,038,372	(9.2%)	↓	MAD	Madrid	1,143,469	MAD	Madrid	1,116,129	
BCN	Barcelona	626,754	(12.5%)	↓	BCN	Barcelona	716,001	BCN	Barcelona	685,142	
HEL	Helsinki	428,761	92.4%	↑	LGW	London Gatwick	530,086	LGW	London Gatwick	453,638	
LGW	London Gatwick	401,501	(24.3%)	↓	DUB	Dublin	303,327	DUB	Dublin	271,494	
DUB	Dublin	347,539	14.6%	↑	MAN	Manchester	241,766	MAN	Manchester	246,263	
MAN	Manchester	185,481	(23.3%)	↓	HEL	Helsinki	222,800	HEL	Helsinki	232,320	
EDI	Edinburgh	131,421	(15.5%)	↓	EDI	Edinburgh	155,478	CDG	Paris	160,907	
GLA	Glasgow	129,380	(12.5%)	↓	GLA	Glasgow	147,892	EDI	Edinburgh	155,580	
CDG	Paris	121,814	3.1%	↑	AMS	Amsterdam	126,376	GLA	Glasgow	152,003	
<u>Skyteam</u>				<u>Growth</u>				<u>Growth</u>			
Destinations Served		155	1.3%	↑	153		0.7%	152			
Most Served Skyteam Airports and Seats Available											
CDG	Paris	1,174,185	(3.0%)	↓	CDG	Paris	1,210,748	CDG	Paris	1,301,551	
FCO	Rome	735,629	(6.5%)	↓	AMS	Amsterdam	816,802	FCO	Rome	795,602	
AMS	Amsterdam	703,568	(13.9%)	↓	FCO	Rome	786,479	AMS	Amsterdam	718,158	
ORY	Paris	662,122	0.6%	↑	ORY	Paris	658,171	ORY	Paris	690,278	
MXP	Milan	493,300	(0.7%)	↓	MXP	Milan	496,578	MXP	Milan	513,815	
PRG	Prague	287,734	1.6%	↑	PRG	Prague	283,165	LYS	Lyon	239,734	
LYS	Lyon	229,992	4.9%	↑	LYS	Lyon	219,191	PRG	Prague	229,317	
LIN	Milan	207,563	(1.4%)	↓	LIN	Milan	210,542	LIN	Milan	215,282	
TLS	Toulouse	192,196	0.1%	↑	TLS	Toulouse	192,072	LHR	London Heathrow	202,156	
MRS	Marseille	162,829	2.0%	↑	NCE	Nice	171,498	TLS	Toulouse	192,718	





Intra European Airline Performance Analysis

Low Cost			2006 YTD			2005 YTD		
Growth	Airline	Seats	Sectors	Aircraft Size	Seats	Sectors	Aircraft Size	
↑	Ryanair	3,197,466 ↑	18,131 ↑	176 ↑	2,633,638	15,146	174	
↑	easyJet	3,133,758 ↑	20,440 ↑	153 ↑	2,741,830	18,130	151	
↑	Air Berlin	1,400,087 ↑	8,543 ↑	164 ↑	964,622	6,194	156	
↑	FlyBE	627,973 ↑	6,838 ↑	92 ↑	518,705	6,607	79	
↑	Germanwings	590,338 ↑	4,307 ↑	137 ↓	284,056	2,002	142	
↑	dba	565,944 ↑	4,686 ↑	121 ↑	349,520	3,431	102	
↑	Meridiana	520,105 ↑	3,567 ↑	146 ↓	500,783	2,570	195	
↑	Norwegian Air Shuttle	438,524 ↑	2,963 ↑	148 ↑	156,420	1,090	144	
↓	bmibaby	388,896 ↓	2,989 ↓	130 ↓	409,244	3,124	131	
↑	Monarch Airlines	302,260 ↑	1,521 ↑	199 ↑	228,240	1,319	173	

Star Alliance			2006 YTD			2005 YTD		
Growth	Airline	Seats	Sectors	Aircraft Size	Seats	Sectors	Aircraft Size	
↑	Lufthansa	4,497,804 ↑	44,687 ↑	101 ↑	4,252,705	42,707	100	
↓	SAS	3,260,465 ↓	26,200 ↓	124 ↓	3,440,922	27,580	125	
↑	Spanair	951,144 ↑	6,504 ↑	146 ↑	822,804	5,844	141	
↑	Austrian	881,958 ↑	11,067 ↑	80 ↑	788,566	10,400	76	
↓	bmi	814,938 ↓	6,542 ↑	125 ↓	871,184	5,036	173	
↓	TAP-Air Portugal	827,110 ↓	5,599 ↓	148 ↑	832,580	6,252	133	
↑	LOT - Polish Airlines	452,867 ↑	6,981 ↑	65 ↑	415,053	6,805	61	
↑	Croatia Airlines	200,479 ↑	1,909 ↑	105 ↓	178,728	1,578	113	
↑	Blue1	182,977 ↑	2,687 ↑	68 ↓	177,818	2,178	82	
↓	Adria Airways	123,444 ↓	1,580 ↓	78 ↓	143,438	1,621	88	

OneWorld			2006 YTD			2005 YTD		
Growth	Airline	Seats	Sectors	Aircraft Size	Seats	Sectors	Aircraft Size	
↓	British Airways	3,675,214 ↓	30,163 ↑	122 ↓	3,879,425	30,033	129	
↓	Iberia	3,426,483 ↓	30,932 ↑	111 ↓	3,646,732	29,230	125	
↑	Finnair	882,583 ↑	7,296 ↑	121 ↓	689,113	4,283	161	
↑	Aer Lingus	825,320 ↑	4,538 ↑	182 ↑	477,127	3,273	146	

Skyteam			2006 YTD			2005 YTD		
Growth	Airline	Seats	Sectors	Aircraft Size	Seats	Sectors	Aircraft Size	
↓	Air France	4,581,446 ↓	43,024 ↑	106 ↓	4,619,190	42,915	108	
↓	Alitalia	2,590,991 ↓	20,248 ↓	128 ↓	2,692,122	20,763	130	
↑	KLM	1,316,955 ↑	12,683 ↑	104 ↓	1,292,930	12,338	105	
↑	CSA	566,047 ↑	5,721 ↑	99 ↓	534,214	5,353	100	

Other			2006 YTD			2005 YTD		
Growth	Airline	Seats	Sectors	Aircraft Size	Seats	Sectors	Aircraft Size	
↑	Air Europa	719,446 ↑	4,039 ↓	178 ↑	553,133	4,056	136	
↓	Air One	744,638 ↓	5,519 ↑	135 ↓	794,784	4,204	189	
↓	Olympic Airlines	709,878 ↓	7,410 ↓	96 ↓	816,058	7,874	104	
↑	Wideroe	570,812 ↑	14,197 ↑	40 ↑	438,819	13,657	32	
↑	Turkish Airlines	511,075 ↑	3,104 ↓	165 ↑	385,809	2,742	141	
↓	Aegean Airlines	452,584 ↓	3,520 ↓	129 ↓	481,782	3,577	135	
↑	SN Brussels Airlines	404,085 ↑	4,372 ↑	92 ↑	300,127	4,310	70	
↑	Malev-Hungarian Airlines	322,216 ↑	3,582 ↑	90 ↓	294,882	2,719	108	
↑	Aeroflot	323,163 ↑	2,428 ↑	133 ↓	310,522	1,882	165	
↑	Binter Canarias	307,740 ↑	4,426 ↑	70 ↑	252,962	3,658	69	

